

# ENAM Antibody (C-term)

Affinity Purified Rabbit Polyclonal Antibody (Pab)

Catalog # AP5838b

## Product Information

---

<b>Application</b>	WB, IHC-P, FC, E
<b>Primary Accession</b>	<a href="#">Q9NRM1</a>
<b>Other Accession</b>	<a href="#">NP_114095.2</a>
<b>Reactivity</b>	Human
<b>Host</b>	Rabbit
<b>Clonality</b>	Polyclonal
<b>Isotype</b>	Rabbit IgG
<b>Clone Names</b>	RB20947
<b>Calculated MW</b>	128785
<b>Antigen Region</b>	1097-1126

## Additional Information

---

<b>Gene ID</b>	10117
<b>Other Names</b>	Enamelin, ENAM
<b>Target/Specificity</b>	This ENAM antibody is generated from rabbits immunized with a KLH conjugated synthetic peptide between 1097-1126 amino acids from the C-terminal region of human ENAM.
<b>Dilution</b>	WB~~1:1000 IHC-P~~1:100~500 FC~~1:10~50 E~~Use at an assay dependent concentration.
<b>Format</b>	Purified polyclonal antibody supplied in PBS with 0.09% (W/V) sodium azide. This antibody is prepared by Saturated Ammonium Sulfate (SAS) precipitation followed by dialysis against PBS.
<b>Storage</b>	Maintain refrigerated at 2-8°C for up to 2 weeks. For long term storage store at -20°C in small aliquots to prevent freeze-thaw cycles.
<b>Precautions</b>	ENAM Antibody (C-term) is for research use only and not for use in diagnostic or therapeutic procedures.

## Protein Information

---

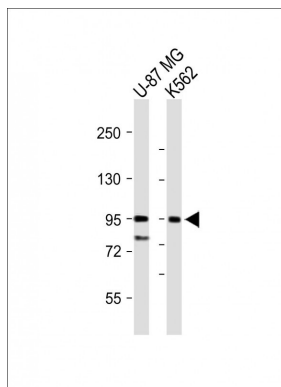
<b>Name</b>	ENAM
<b>Function</b>	Involved in the mineralization and structural organization of enamel. Involved in the extension of enamel during the secretory stage of dental enamel formation.

**Cellular Location**

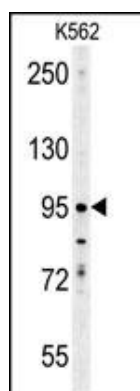
Secreted, extracellular space, extracellular matrix  
{ECO:0000250|UniProtKB:O97939}

**Tissue Location**

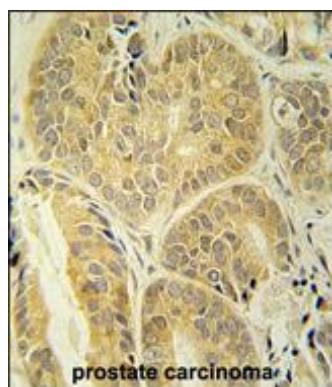
Expressed in tooth particularly in odontoblast, ameloblast and cementoblast.

**Images**

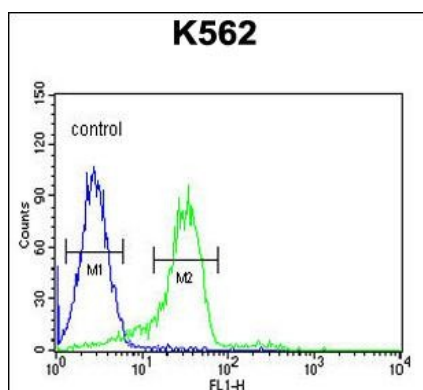
All lanes : Anti-ENAM Antibody (C-term) at 1:1000 dilution  
Lane 1: U-87 MG whole cell lysate Lane 2: K562 MG whole cell lysate Lysates/proteins at 20 µg per lane. Secondary Goat Anti-Rabbit IgG, (H+L), Peroxidase conjugated (ASP1615) at 1/15000 dilution. Observed band size : 95kDa Blocking/Dilution buffer: 5% NFDM/TBST.



ENAM Antibody (C-term) (Cat. #AP5838b) western blot analysis in K562 cell line lysates (35ug/lane). This demonstrates the ENAM antibody detected the ENAM protein (arrow).



ENAM antibody(C-term) (Cat. #AP5838b) immunohistochemistry analysis in formalin fixed and paraffin embedded human prostate carcinoma followed by peroxidase conjugation of the secondary antibody and DAB staining. This data demonstrates the use of the ENAM antibody(C-term) for immunohistochemistry. Clinical relevance has not been evaluated.



ENAM Antibody (C-term) (Cat. #AP5838b) flow cytometric analysis of K562 cells (right histogram) compared to a negative control cell (left histogram). FITC-conjugated goat-anti-rabbit secondary antibodies were used for the analysis.

## Citations

---

- [TNF- \$\alpha\$ -induced IL-6 and MMP-9 expression in immortalized ameloblastoma cell line established by hTERT.](#)

Please note: All products are 'FOR RESEARCH USE ONLY. NOT FOR USE IN DIAGNOSTIC OR THERAPEUTIC PROCEDURES'.