

Alpha 2 antiplasmin Rabbit pAb

Alpha 2 antiplasmin Rabbit pAb
Catalog # AP58392

Product Information

| | |
|--------------------------------|---|
| Application | WB, IHC-P, IHC-F, IF |
| Primary Accession | P08697 |
| Reactivity | Human, Mouse, Rat |
| Predicted | Dog, Horse, Rabbit |
| Host | Rabbit |
| Clonality | Polyclonal |
| Calculated MW | 54566 |
| Physical State | Liquid |
| Immunogen | KLH conjugated synthetic peptide derived from human SERPINF2 |
| Epitope Specificity | 161-260/491 |
| Isotype | IgG |
| Purity | affinity purified by Protein A |
| Buffer | 0.01M TBS (pH7.4) with 1% BSA, 0.02% Proclin300 and 50% Glycerol. |
| SUBCELLULAR LOCATION | Secreted. |
| SIMILARITY | Belongs to the serpin family. |
| SUBUNIT | Forms protease inhibiting heterodimer with TMPRSS7. |
| DISEASE | Alpha-2-plasmin inhibitor deficiency (APLID) [MIM:262850]: An autosomal recessive disorder resulting in severe hemorrhagic diathesis. Note=The disease is caused by mutations affecting the gene represented in this entry. |
| Important Note | This product as supplied is intended for research use only, not for use in human, therapeutic or diagnostic applications. |
| Background Descriptions | Alpha 2 Antiplasmin is a member of the serpin family of serine protease inhibitors. The protein is a major inhibitor of plasmin, which degrades fibrin and various other proteins. Consequently, the proper function of this gene has a major role in regulating the blood clotting pathway. Mutations in this gene result in alpha-2-plasmin inhibitor deficiency, which is characterized by severe hemorrhagic diathesis. Multiple transcript variants encoding different isoforms have been found for this gene. |

Additional Information

| | |
|---------------------------|---|
| Gene ID | 5345 |
| Other Names | Alpha-2-antiplasmin, Alpha-2-AP, Alpha-2-plasmin inhibitor, Alpha-2-PI, Serpin F2, SERPINF2, AAP, PLI |
| Target/Specificity | Expressed by the liver and secreted in plasma. |
| Dilution | WB=1:500-2000,IHC-P=1:100-500,IHC-F=1:100-500,IF=1:100-500 |
| Storage | Store at -20 °C for one year. Avoid repeated freeze/thaw cycles. When |

reconstituted in sterile pH 7.4 0.01M PBS or diluent of antibody the antibody is stable for at least two weeks at 2-4 °C.

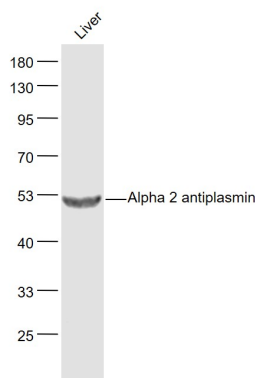
Protein Information

| | |
|--------------------------|---|
| Name | SERPINF2 |
| Synonyms | AAP, PLI |
| Function | Serine protease inhibitor. The major targets of this inhibitor are plasmin and trypsin, but it also inactivates matrilysin- 3/TMPRSS7 and chymotrypsin. |
| Cellular Location | Secreted. |
| Tissue Location | Expressed by the liver and secreted in plasma. |

Background

Alpha 2 Antiplasmin is a member of the serpin family of serine protease inhibitors. The protein is a major inhibitor of plasmin, which degrades fibrin and various other proteins. Consequently, the proper function of this gene has a major role in regulating the blood clotting pathway. Mutations in this gene result in alpha-2-plasmin inhibitor deficiency, which is characterized by severe hemorrhagic diathesis. Multiple transcript variants encoding different isoforms have been found for this gene.

Images



Sample:

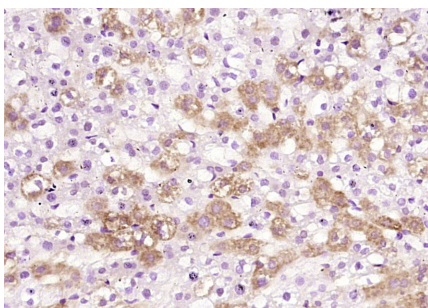
Liver (Mouse) Lysate at 40 ug

Primary: Anti- Alpha 2 antiplasmin (AP58392) at 1/1000 dilution

Secondary: IRDye800CW Goat Anti-Rabbit IgG at 1/20000 dilution

Predicted band size: 50 kD

Observed band size: 52 kD



Paraformaldehyde-fixed, paraffin embedded (rat liver); Antigen retrieval by boiling in sodium citrate buffer (pH6.0) for 15min; Block endogenous peroxidase by 3% hydrogen peroxide for 20 minutes; Blocking buffer (normal goat serum) at 37°C for 30min; Antibody incubation with (Alpha 2 antiplasmin) Polyclonal Antibody, Unconjugated (AP58392) at 1:200 overnight at 4°C, followed by operating according to SP Kit(Rabbit) (sp-0023) instructions and DAB staining.

Please note: All products are 'FOR RESEARCH USE ONLY. NOT FOR USE IN DIAGNOSTIC OR THERAPEUTIC PROCEDURES'.