

# PRR11 Polyclonal Antibody

Purified Rabbit Polyclonal Antibody (Pab)

Catalog # AP58400

## Product Information

---

<b>Application</b>	IHC-P, IHC-F, IF, E
<b>Primary Accession</b>	<a href="#">Q96HE9</a>
<b>Reactivity</b>	Rat, Pig, Bovine
<b>Host</b>	Rabbit
<b>Clonality</b>	Polyclonal
<b>Calculated MW</b>	40085
<b>Physical State</b>	Liquid
<b>Immunogen</b>	KLH conjugated synthetic peptide derived from human PRR11
<b>Epitope Specificity</b>	201-300/360
<b>Isotype</b>	IgG
<b>Purity</b>	affinity purified by Protein A
<b>Buffer</b>	0.01M TBS (pH7.4) with 1% BSA, 0.02% Proclin300 and 50% Glycerol.
<b>SUBCELLULAR LOCATION</b>	Cytoplasm.
<b>Post-translational modifications</b>	Ubiquitinated (Probable). Rapidly degraded by the proteasome; degradation may involve FBXW7-specific phosphorylated phosphodegron motifs.
<b>Important Note</b>	This product as supplied is intended for research use only, not for use in human, therapeutic or diagnostic applications.
<b>Background Descriptions</b>	PRR11 (proline rich 11) is a 360 amino acid protein that is encoded by a gene located on human chromosome 17. Human chromosome 17 comprises over 2.5% of the human genome and encodes over 1,200 genes. Two key tumor suppressor genes are associated with chromosome 17, namely, p53 and BRCA1. Tumor suppressor p53 is necessary for maintenance of cellular genetic integrity by moderating cell fate through DNA repair versus cell death. Malfunction or loss of p53 expression is associated with malignant cell growth and Li-Fraumeni syndrome. Like p53, BRCA1 is directly involved in DNA repair, though specifically it is recognized as a genetic determinant of early onset breast cancer and predisposition to cancers of the ovary, colon, prostate gland and fallopian tubes.

## Additional Information

---

<b>Gene ID</b>	55771
<b>Other Names</b>	Proline-rich protein 11, PRR11
<b>Dilution</b>	IHC-P=1:100-500,IHC-F=1:100-500,IF=1:100-500,ELISA=1:5000-10000
<b>Format</b>	0.01M TBS(pH7.4) with 1% BSA, 0.09% (W/V) sodium azide and 50% Glyce
<b>Storage</b>	Store at -20 °C for one year. Avoid repeated freeze/thaw cycles. When reconstituted in sterile pH 7.4 0.01M PBS or diluent of antibody the antibody

is stable for at least two weeks at 2-4 °C.

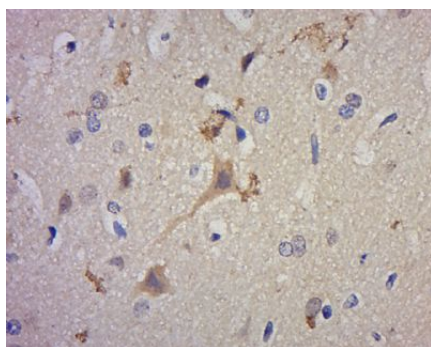
## Protein Information

---

<b>Name</b>	PRR11
<b>Function</b>	Plays a critical role in cell cycle progression.
<b>Cellular Location</b>	Cytoplasm. Nucleus
<b>Tissue Location</b>	Ubiquitously expressed.

## Images

---



Paraformaldehyde-fixed, paraffin embedded (Mouse brain); Antigen retrieval by boiling in sodium citrate buffer (pH6.0) for 15min; Block endogenous peroxidase by 3% hydrogen peroxide for 20 minutes; Blocking buffer (normal goat serum) at 37°C for 30min; Antibody incubation with (Proline rich protein 11 ) Polyclonal Antibody, Unconjugated (AP58400) at 1:400 overnight at 4°C, followed by a conjugated secondary antibody (sp-0023) for 20 minutes and DAB staining.

Please note: All products are 'FOR RESEARCH USE ONLY. NOT FOR USE IN DIAGNOSTIC OR THERAPEUTIC PROCEDURES'.