

UEVLD Polyclonal Antibody

Purified Rabbit Polyclonal Antibody (Pab)

Catalog # AP58411

Product Information

Application	WB, IHC-P, IHC-F, IF, E
Primary Accession	Q8IX04
Reactivity	Rat, Pig, Dog, Bovine
Host	Rabbit
Clonality	Polyclonal
Calculated MW	52264
Physical State	Liquid
Immunogen	KLH conjugated synthetic peptide derived from human UEVLD
Epitope Specificity	85-180/471
Isotype	IgG
Purity	affinity purified by Protein A
Buffer	0.01M TBS (pH7.4) with 1% BSA, 0.02% Proclin300 and 50% Glycerol.
SIMILARITY	In the N-terminal section; belongs to the ubiquitin-conjugating enzyme family. UEV subfamily. In the C-terminal section; belongs to the LDH/MDH superfamily. Contains 1 UEV (ubiquitin E2 variant) domain.
SUBUNIT	Homodimer.
Important Note	This product as supplied is intended for research use only, not for use in human, therapeutic or diagnostic applications.
Background Descriptions	UEV3, also known as EV and lactate/malate dehydrogenase domain-containing protein, is a 471 amino acid protein that contains one UEV (ubiquitin E2 variant) domain, which typically interacts with ubiquitin. UEV3 is thought to be a paralogue of tsg 101, a protein that exerts regulatory effects on E2 activity in cellular ubiquitination processes. With amino-terminal homology to the catalytic domain of ubiquitin-conjugating enzymes, it is thought that UEV3 may function as a negative regulator of polyubiquitination. UEV3 is expressed in various colon carcinoma cell lines, carcinomas of the uterine cervix and peripheral blood leukocytes as well as normal colon and cervical epithelium.

Additional Information

Gene ID	55293
Other Names	Ubiquitin-conjugating enzyme E2 variant 3, UEV-3, EV and lactate/malate dehydrogenase domain-containing protein, UEVLD {ECO:0000312 EMBL:AAH64566.1}
Target/Specificity	Colon, colon carcinoma cell lines, normal cervical epithelium, carcinomas of the uterine cervix and peripheral blood leukocytes.
Dilution	WB=1:500-2000,IHC-P=1:100-500,IHC-F=1:100-500,IF=1:100-500,ELISA=1:5000

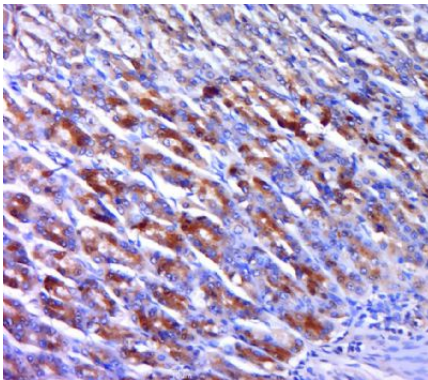
-10000

Format	0.01M TBS(pH7.4) with 1% BSA, 0.09% (W/V) sodium azide and 50% Glyce
Storage	Store at -20 °C for one year. Avoid repeated freeze/thaw cycles. When reconstituted in sterile pH 7.4 0.01M PBS or diluent of antibody the antibody is stable for at least two weeks at 2-4 °C.

Protein Information

Name	UEVLD {ECO:0000312 EMBL:AAH64566.1}
Function	Possible negative regulator of polyubiquitination.
Tissue Location	Colon, colon carcinoma cell lines, normal cervical epithelium, carcinomas of the uterine cervix and peripheral blood leukocytes.

Images



Paraformaldehyde-fixed, paraffin embedded (rat stomach tissue); Antigen retrieval by boiling in sodium citrate buffer (pH6.0) for 15min; Block endogenous peroxidase by 3% hydrogen peroxide for 20 minutes; Blocking buffer (normal goat serum) at 37°C for 30min; Antibody incubation with (UEVLD) Polyclonal Antibody, Unconjugated (AP58411) at 1:400 overnight at 4°C, followed by a conjugated secondary (sp-0023) for 20 minutes and DAB staining.

Please note: All products are 'FOR RESEARCH USE ONLY. NOT FOR USE IN DIAGNOSTIC OR THERAPEUTIC PROCEDURES'.