

GM2A Antibody (N-term)

Affinity Purified Rabbit Polyclonal Antibody (Pab)

Catalog # AP5841a

Product Information

Application	WB, E
Primary Accession	P17900
Other Accession	Q8HXX6 , NP_000396.2
Reactivity	Human, Mouse
Predicted	Monkey
Host	Rabbit
Clonality	Polyclonal
Isotype	Rabbit IgG
Clone Names	RB21192
Calculated MW	20838
Antigen Region	25-54

Additional Information

Gene ID	2760
Other Names	Ganglioside GM2 activator, Cerebroside sulfate activator protein, GM2-AP, Sphingolipid activator protein 3, SAP-3, Ganglioside GM2 activator isoform short, GM2A
Target/Specificity	This GM2A antibody is generated from rabbits immunized with a KLH conjugated synthetic peptide between 25-54 amino acids of human GM2A.
Dilution	WB~~1:1000 E~~Use at an assay dependent concentration.
Format	Purified polyclonal antibody supplied in PBS with 0.09% (W/V) sodium azide. This antibody is purified through a protein A column, followed by peptide affinity purification.
Storage	Maintain refrigerated at 2-8°C for up to 2 weeks. For long term storage store at -20°C in small aliquots to prevent freeze-thaw cycles.
Precautions	GM2A Antibody (N-term) is for research use only and not for use in diagnostic or therapeutic procedures.

Protein Information

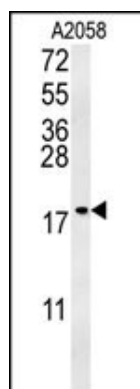
Name	GM2A (HGNC:4367)
Function	The large binding pocket can accommodate several single chain phospholipids and fatty acids, GM2A also exhibits some calcium- independent

phospholipase activity (By similarity). Binds gangliosides and stimulates ganglioside GM2 degradation. It stimulates only the breakdown of ganglioside GM2 and glycolipid GA2 by beta-hexosaminidase A. It extracts single GM2 molecules from membranes and presents them in soluble form to beta-hexosaminidase A for cleavage of N-acetyl-D- galactosamine and conversion to GM3 (By similarity). Has cholesterol transfer activity (PubMed:[17552909](#)).

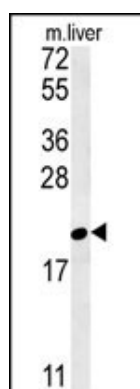
Cellular Location

Lysosome.

Images



GM2A Antibody (N-term) (Cat. #AP5841a) western blot analysis in A2058 cell line lysates (35ug/lane). This demonstrates the GM2A antibody detected the GM2A protein (arrow).



GM2A Antibody (N-term) (Cat. #AP5841a) western blot analysis in mouse liver tissue lysates (35ug/lane). This demonstrates the GM2A antibody detected the GM2A protein (arrow).

Citations

- [Cigarette smoking exposure alters pebp1 DNA methylation and protein profile involved in MAPK signaling pathway in mice testis.](#)

Please note: All products are 'FOR RESEARCH USE ONLY. NOT FOR USE IN DIAGNOSTIC OR THERAPEUTIC PROCEDURES'.