

# SCGB3A1 Polyclonal Antibody

Purified Rabbit Polyclonal Antibody (Pab)

Catalog # AP58437

## Product Information

---

|                                |   |
|--------------------------------|---|
| <b>Application</b>             | IHC-P, IHC-F, IF, E   |
| <b>Primary Accession</b>       | <a href="#">Q96QR1</a>  |
| <b>Reactivity</b>              | Human   |
| <b>Host</b>                    | Rabbit  |
| <b>Clonality</b>               | Polyclonal  |
| <b>Calculated MW</b>           | 10100   |
| <b>Physical State</b>          | Liquid  |
| <b>Immunogen</b>               | KLH conjugated synthetic peptide derived from human SCGB3A1   |
| <b>Epitope Specificity</b>     | 51-104/104  |
| <b>Isotype</b>                 | IgG   |
| <b>Purity</b>                  | affinity purified by Protein A  |
| <b>Buffer</b>                  | 0.01M TBS (pH7.4) with 1% BSA, 0.02% Proclin300 and 50% Glycerol.   |
| <b>SUBCELLULAR LOCATION</b>    | Secreted.   |
| <b>SIMILARITY</b>              | Belongs to the secretoglobin family. UGRP subfamily.  |
| <b>Important Note</b>          | This product as supplied is intended for research use only, not for use in human, therapeutic or diagnostic applications. |
| <b>Background Descriptions</b> | SCGB3A1 is a potential growth inhibitory cytokine.  |

## Additional Information

---

|                           |   |
|---------------------------|---|
| <b>Gene ID</b>            | 92304   |
| <b>Other Names</b>        | Secretoglobin family 3A member 1, Cytokine HIN-1, High in normal 1, Pneumo secretory protein 2, PnSP-2, Uteroglobin-related protein 2, SCGB3A1, HIN1, PNSP2, UGRP2                              |
| <b>Target/Specificity</b> | Highly expressed in breast tissues. Absent in breast cancer cell lines.   |
| <b>Dilution</b>           | IHC-P=1:100-500,IHC-F=1:100-500,IF=1:100-500,ELISA=1:5000-10000   |
| <b>Format</b>             | 0.01M TBS(pH7.4) with 1% BSA, 0.09% (W/V) sodium azide and 50% Glyce  |
| <b>Storage</b>            | Store at -20 °C for one year. Avoid repeated freeze/thaw cycles. When reconstituted in sterile pH 7.4 0.01M PBS or diluent of antibody the antibody is stable for at least two weeks at 2-4 °C. |

## Protein Information

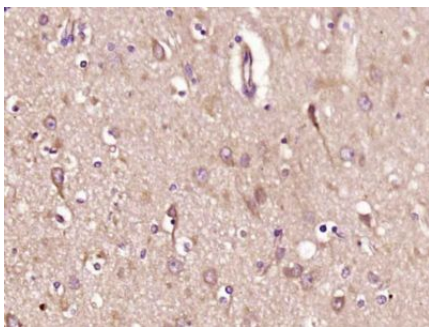
---

|             |         |
|-------------|---------|
| <b>Name</b> | SCGB3A1 |
|-------------|---------|

|                          |  |
|--------------------------|--|
| <b>Synonyms</b>          | HIN1, PNSP2, UGRP2   |
| <b>Function</b>          | Secreted cytokine-like protein. Inhibits cell growth in vitro.   |
| <b>Cellular Location</b> | Secreted.  |
| <b>Tissue Location</b>   | Highly expressed in lung and prostate (PubMed:11481438). Also found in mammary gland, spleen, pancreas, testis and liver (PubMed:11481438). Detected throughout the airway epithelium in lung, with highest expression in large airways (PubMed:12406855). Found in lung submucosal glands where it localizes to acinar and ductile cells (PubMed:12406855). Not detected in respiratory bronchioles, alveolar ducts or alveolar epithelium (PubMed:12406855). In mammary gland, specifically localizes to luminal epithelial cells (PubMed:11481438). |

## Images

---



Paraformaldehyde-fixed, paraffin embedded (Human brain glioma); Antigen retrieval by boiling in sodium citrate buffer (pH6.0) for 15min; Block endogenous peroxidase by 3% hydrogen peroxide for 20 minutes; Blocking buffer (normal goat serum) at 37°C for 30min; Antibody incubation with (SCGB3A1) Polyclonal Antibody, Unconjugated (AP58437) at 1:400 overnight at 4°C, followed by operating according to SP Kit(Rabbit) (sp-0023) instructions and DAB staining.

Please note: All products are 'FOR RESEARCH USE ONLY. NOT FOR USE IN DIAGNOSTIC OR THERAPEUTIC PROCEDURES'.