

CRABP1/Retinol binding protein Polyclonal Antibody

Purified Rabbit Polyclonal Antibody (Pab)

Catalog # AP58446

Product Information

Application	WB, IHC-P, IHC-F, IF, E
Primary Accession	P09455
Reactivity	Rat, Pig, Dog, Bovine
Host	Rabbit
Clonality	Polyclonal
Calculated MW	15850
Physical State	Liquid
Immunogen	KLH conjugated synthetic peptide derived from human Retinol binding protein
Epitope Specificity	45-135/135
Isotype	IgG
Purity	affinity purified by Protein A
Buffer	0.01M TBS (pH7.4) with 1% BSA, 0.02% Proclin300 and 50% Glycerol.
SUBCELLULAR LOCATION	Cytoplasm.
SIMILARITY	Belongs to the calycin superfamily. Fatty-acid binding protein (FABP) family.
Important Note	This product as supplied is intended for research use only, not for use in human, therapeutic or diagnostic applications.
Background Descriptions	RBP2 is an abundant protein present in the smallintestinal epithelium. It is thought to participate in the uptakeand/or intracellular metabolism of vitamin A. Vitamin A is afat-soluble vitamin necessary for growth, reproduction,differentiation of epithelial tissues, and vision. RBP2 may alsomodulate the supply of retinoic acid to the nuclei of endometrialcells during the menstrual cycle.

Additional Information

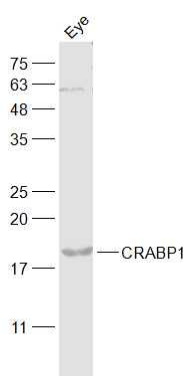
Gene ID	5947
Other Names	Retinol-binding protein 1, Cellular retinol-binding protein, CRBP, Cellular retinol-binding protein I, CRBP-I, RBP1, CRBP1
Target/Specificity	Detected in nearly all the tissues with higher expression in adult ovary, pancreas, pituitary gland and adrenal gland, and fetal liver.
Dilution	WB=1:500-2000,IHC-P=1:100-500,IHC-F=1:100-500,IF=1:50-200,ELISA=1:5000-10000
Format	0.01M TBS(pH7.4) with 1% BSA, 0.09% (W/V) sodium azide and 50% Glyce
Storage	Store at -20 °C for one year. Avoid repeated freeze/thaw cycles. When reconstituted in sterile pH 7.4 0.01M PBS or diluent of antibody the antibody

is stable for at least two weeks at 2-4 °C.

Protein Information

Name	RBP1
Synonyms	CRBP1
Function	Cytoplasmic retinol-binding protein (PubMed: 22665496 , PubMed: 26900151 , PubMed: 28057518). Accepts retinol from the transport protein STRA6, and thereby contributes to retinol uptake, storage and retinoid homeostasis (PubMed: 15632377 , PubMed: 22665496).
Cellular Location	Cytoplasm. Lipid droplet
Tissue Location	Detected in nearly all the tissues with higher expression in adult ovary, pancreas, pituitary gland and adrenal gland, and fetal liver.

Images



Sample:

Eye (Mouse) Lysate at 40 ug

Primary: Anti-CRABP1 (AP58446) at 1/1000 dilution

Secondary: IRDye800CW Goat Anti-Rabbit IgG at 1/20000 dilution

Predicted band size: 16 kD

Observed band size: 18 kD

Please note: All products are 'FOR RESEARCH USE ONLY. NOT FOR USE IN DIAGNOSTIC OR THERAPEUTIC PROCEDURES'.