

# RLLM1 Polyclonal Antibody

Purified Rabbit Polyclonal Antibody (Pab)

Catalog # AP58456

## Product Information

Application	IHC-P, IHC-F, IF, E
Primary Accession	<a href="#">Q9Y224</a>
Reactivity	Rat, Pig, Dog, Bovine
Host	Rabbit
Clonality	Polyclonal
Calculated MW	28068

## Additional Information

Gene ID	51637
Other Names	RNA transcription, translation and transport factor protein {ECO:0000312 HGNC:HGNC:23169}, CLE7 homolog, CLE, hCLE, RTRAF ( <a href="#">HGNC:23169</a> )
Dilution	IHC-P=1:100-500,IHC-F=1:100-500,IF=1:100-500,ELISA=1:5000-10000
Format	0.01M TBS(pH7.4) with 1% BSA, 0.09% (W/V) sodium azide and 50% Glyce
Storage	Store at -20 °C for one year. Avoid repeated freeze/thaw cycles. When reconstituted in sterile pH 7.4 0.01M PBS or diluent of antibody the antibody is stable for at least two weeks at 2-4 °C.

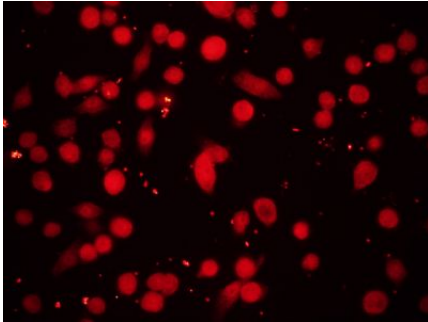
## Protein Information

Name	RTRAF ( <a href="#">HGNC:23169</a> )
Function	RNA-binding protein involved in modulation of mRNA transcription by Polymerase II (PubMed: <a href="#">16950395</a> ). Component of the tRNA-splicing ligase complex and is required for tRNA ligation (PubMed: <a href="#">24870230</a> ). May be required for RNA transport (PubMed: <a href="#">24608264</a> ).
Cellular Location	Nucleus. Cytoplasm, cytosol. Cytoplasm, perinuclear region. Cytoplasm, cytoskeleton, microtubule organizing center, centrosome. Note=May localize at the centrosome during mitosis (PubMed:15147888). Shuttles between the cytosol and the nucleus: enters into the nucleus in case of active transcription while it accumulates in cytosol when transcription level is low (PubMed:24608264).
Tissue Location	Widely expressed. Expressed at high level in heart and skeletal muscle. Expressed at intermediate level in liver, pancreas, fetal brain and fetal lung. Weakly expressed in adult brain, adult lung, placenta, fetal liver and fetal

kidney. Overexpressed in many brain tumors.

## Images

---



Tissue/cell: human pancreas carcinoma (BXPC-3);4% Paraformaldehyde-fixed;  
Blocking buffer (normal goat serum,C-0005) at 37°C for 20 min;  
Incubation: Anti-RLLM1 Polyclonal Antibody, Unconjugated(AP58456) 1:200, overnight at 4°C; The secondary antibody was Goat Anti-Rabbit IgG, Cy5 conjugated(bs-0295G-Cy5)used at 1:200 dilution for 40 minutes at 37°C.

Please note: All products are 'FOR RESEARCH USE ONLY. NOT FOR USE IN DIAGNOSTIC OR THERAPEUTIC PROCEDURES'.