

PAGE1 Polyclonal Antibody

Purified Rabbit Polyclonal Antibody (Pab)

Catalog # AP58469

Product Information

Application	WB, IHC-P, IHC-F, IF, E
Primary Accession	O75459
Reactivity	Human
Host	Rabbit
Clonality	Polyclonal
Calculated MW	16150
Physical State	Liquid
Immunogen	KLH conjugated synthetic peptide derived from human PAGE1
Epitope Specificity	51-146/146
Isotype	IgG
Purity	affinity purified by Protein A
Buffer	0.01M TBS (pH7.4) with 1% BSA, 0.02% Proclin300 and 50% Glycerol.
SIMILARITY	Belongs to the GAGE family.
Important Note	This product as supplied is intended for research use only, not for use in human, therapeutic or diagnostic applications.
Background Descriptions	This gene belongs to a family of genes that are expressed in a variety of tumors but not in normal tissues, except for the testis. The sequences of the family members are highly related but differ by scattered nucleotide substitutions. The antigenic peptide YRPRPRRY, which is also encoded by several other family members, is recognized by autologous cytolytic T lymphocytes. Nothing is presently known about the function of this protein. Alternative splicing results in multiple transcript variants.

Additional Information

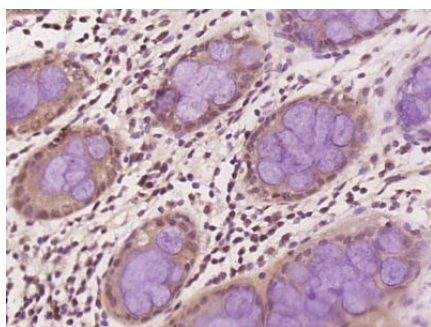
Gene ID	8712
Other Names	P antigen family member 1, PAGE-1, AL5, G antigen 9, GAGE-9, G antigen family B member 1, Prostate-associated gene 1 protein, PAGE1, GAGE9, GAGEB1
Target/Specificity	Isolated from prostate cancer cell lines; expression associated with progression to androgen insensitive phenotype. Expressed in normal testis and at lower level in normal placenta.
Dilution	WB=1:500-2000,IHC-P=1:100-500,IHC-F=1:100-500,IF=1:100-500,ELISA=1:5000-10000
Format	0.01M TBS(pH7.4) with 1% BSA, 0.09% (W/V) sodium azide and 50% Glyce
Storage	Store at -20 °C for one year. Avoid repeated freeze/thaw cycles. When

reconstituted in sterile pH 7.4 0.01M PBS or diluent of antibody the antibody is stable for at least two weeks at 2-4 °C.

Protein Information

Name	PAGE1
Synonyms	GAGE9, GAGEB1
Tissue Location	Isolated from prostate cancer cell lines; expression associated with progression to androgen insensitive phenotype. Expressed in normal testis and at lower level in normal placenta

Images



Paraformaldehyde-fixed, paraffin embedded (human cervical carcinoma); Antigen retrieval by boiling in sodium citrate buffer (pH6.0) for 15min; Block endogenous peroxidase by 3% hydrogen peroxide for 20 minutes; Blocking buffer (normal goat serum) at 37°C for 30min; Antibody incubation with (PAGE1) Polyclonal Antibody, Unconjugated (AP58469) at 1:400 overnight at 4°C, followed by operating according to SP Kit(Rabbit) (sp-0023) instructions and DAB staining.

Please note: All products are 'FOR RESEARCH USE ONLY. NOT FOR USE IN DIAGNOSTIC OR THERAPEUTIC PROCEDURES'.