

RLBP1L1 Polyclonal Antibody

Purified Rabbit Polyclonal Antibody (Pab)

Catalog # AP58472

Product Information

Application	IHC-P, IHC-F, IF, E
Primary Accession	Q8IUQ0
Reactivity	Rat, Pig, Dog, Bovine
Host	Rabbit
Clonality	Polyclonal
Calculated MW	40788
Physical State	Liquid
Immunogen	KLH conjugated synthetic peptide derived from human ICRF/REG1 alpha
Epitope Specificity	231-330/354
Isotype	IgG
Purity	affinity purified by Protein A
Buffer	0.01M TBS (pH7.4) with 1% BSA, 0.02% Proclin300 and 50% Glycerol.
SUBCELLULAR LOCATION	Golgi apparatus, trans-Golgi network membrane; Peripheral membrane protein. Cytoplasmic vesicle, clathrin-coated vesicle. Early endosome membrane; Peripheral membrane protein.
SIMILARITY	Contains 1 CRAL-TRIO domain.
SUBUNIT	Forms a complex with clathrin heavy chain and gamma-adaptin.
Important Note	This product as supplied is intended for research use only, not for use in human, therapeutic or diagnostic applications.
Background Descriptions	RLBP1L1 is a protein of unknown function. It has 45% identity with human CRALBP (Cellular retinaldehyde-binding protein) which carries 11-cis-retinol or 11-cis-retinaldehyde as endogenous ligands and may function as a substrate carrier protein that modulates interaction of these retinoids with visual cycle enzymes. RLBP1L1 is expressed in brain, and several human carcinoma cell lines.

Additional Information

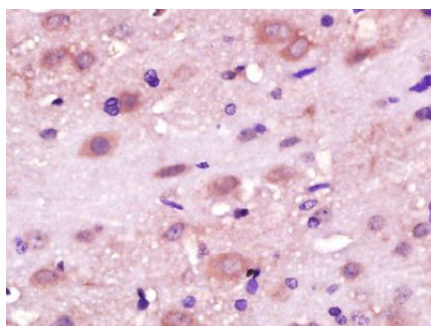
Gene ID	157807
Other Names	Clavesin-1, Cellular retinaldehyde-binding protein-like, Retinaldehyde-binding protein 1-like 1, clathrin vesicle-associated Sec14 protein 1, CLVS1, CRALBPL, RLBP1L1
Target/Specificity	Expressed mainly in the brain.
Dilution	IHC-P=1:100-500,IHC-F=1:100-500,IF=1:100-500,ELISA=1:5000-10000
Format	0.01M TBS(pH7.4) with 1% BSA, 0.09% (W/V) sodium azide and 50% Glyce
Storage	Store at -20 °C for one year. Avoid repeated freeze/thaw cycles. When

reconstituted in sterile pH 7.4 0.01M PBS or diluent of antibody the antibody is stable for at least two weeks at 2-4 °C.

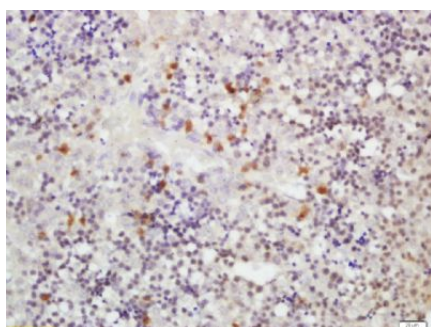
Protein Information

Name	CLVS1
Synonyms	CRALBPL, RLBP1L1
Function	Required for normal morphology of late endosomes and/or lysosomes in neurons (By similarity). Binds phosphatidylinositol 3,5- bisphosphate (PtdIns(3,5)P2).
Cellular Location	Golgi apparatus, trans-Golgi network membrane; Peripheral membrane protein. Cytoplasmic vesicle, clathrin-coated vesicle. Early endosome membrane; Peripheral membrane protein
Tissue Location	Expressed mainly in the brain.

Images



Paraformaldehyde-fixed, paraffin embedded (Rat brain); Antigen retrieval by boiling in sodium citrate buffer (pH6.0) for 15min; Block endogenous peroxidase by 3% hydrogen peroxide for 20 minutes; Blocking buffer (normal goat serum) at 37°C for 30min; Antibody incubation with (RLBP1L1) Polyclonal Antibody, Unconjugated (AP58472) at 1:400 overnight at 4°C, followed by operating according to SP Kit(Rabbit) (sp-0023) instructions and DAB staining.



Tissue/cell: mouse fetal liver; 4% Paraformaldehyde-fixed and paraffin-embedded;
Antigen retrieval: citrate buffer (0.01M, pH 6.0), Boiling bathing for 15min; Block endogenous peroxidase by 3% Hydrogen peroxide for 30min; Blocking buffer (normal goat serum,C-0005) at 37°C for 20 min;
Incubation: Anti-RLBP1L1 Polyclonal Antibody, Unconjugated(AP58472) 1:200, overnight at 4°C, followed by conjugation to the secondary antibody(SP-0023) and DAB(C-0010) staining

Please note: All products are 'FOR RESEARCH USE ONLY. NOT FOR USE IN DIAGNOSTIC OR THERAPEUTIC PROCEDURES'.