

ICAM5 Polyclonal Antibody

Purified Rabbit Polyclonal Antibody (Pab)

Catalog # AP58488

Product Information

Application	WB, IHC-P, IHC-F, IF, E
Primary Accession	Q9UMF0
Reactivity	Rat, Pig, Bovine
Host	Rabbit
Clonality	Polyclonal
Calculated MW	97116
Physical State	Liquid
Immunogen	KLH conjugated synthetic peptide derived from human ICAM5
Epitope Specificity	501-600/924
Isotype	IgG
Purity	affinity purified by Protein A
Buffer	0.01M TBS (pH7.4) with 1% BSA, 0.02% Proclin300 and 50% Glycerol.
SUBCELLULAR LOCATION	Membrane; Single-pass type I membrane protein.
SIMILARITY	Belongs to the immunoglobulin superfamily. ICAM family. Contains 9 Ig-like C2-type (immunoglobulin-like) domains.
Important Note	This product as supplied is intended for research use only, not for use in human, therapeutic or diagnostic applications.
Background Descriptions	ICAM5 is a member of the intercellular adhesion molecule (ICAM) family. All ICAM proteins are type I transmembrane glycoproteins, contain 2-9 immunoglobulin-like C2-type domains, and bind to the leukocyte adhesion LFA-1 protein. This protein is expressed on the surface of telencephalic neurons and displays two types of adhesion activity, homophilic binding between neurons and heterophilic binding between neurons and leukocytes. It may be a critical component in neuron-microglial cell interactions in the course of normal development or as part of neurodegenerative diseases.

Additional Information

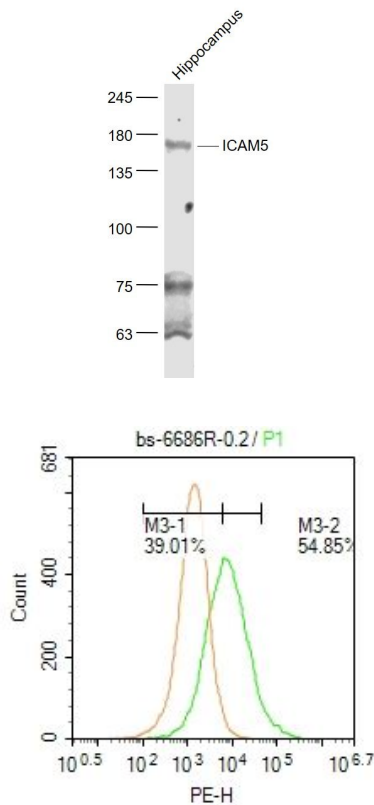
Gene ID	7087
Other Names	Intercellular adhesion molecule 5, ICAM-5, Telencephalin, ICAM5, TLCN, TLN
Target/Specificity	Expressed on neurons in the most rostral segment of the mammalian brain, the telencephalon.
Dilution	WB=1:500-2000, IHC-P=1:100-500, IHC-F=1:100-500, IF=1:100-500, Flow-Cyt=0.2 ug/test, ELISA=1:5000-10000
Format	0.01M TBS(pH7.4) with 1% BSA, 0.09% (W/V) sodium azide and 50% Glyce
Storage	Store at -20 °C for one year. Avoid repeated freeze/thaw cycles. When

reconstituted in sterile pH 7.4 0.01M PBS or diluent of antibody the antibody is stable for at least two weeks at 2-4 °C.

Protein Information

Name	ICAM5
Synonyms	TLCN, TLN
Function	ICAM proteins are ligands for the leukocyte adhesion protein LFA-1 (integrin alpha-L/beta-2).
Cellular Location	Membrane; Single-pass type I membrane protein.
Tissue Location	Expressed on neurons in the most rostral segment of the mammalian brain, the telencephalon

Images



Sample:

Hippocampus (Mouse) Lysate at 40 ug
Primary: Anti- ICAM5 (AP58488) at 1/1000 dilution
Secondary: IRDye800CW Goat Anti-Rabbit IgG at 1/20000 dilution
Predicted band size: 97 kD
Observed band size: 167 kD

Blank control: Hela.

Primary Antibody (green line): Rabbit Anti-ICAM5 antibody (AP58488)
Dilution: 1 µg /10⁶ cells;
Isotype Control Antibody (orange line): Rabbit IgG .
Secondary Antibody : Goat anti-rabbit IgG-PE
Dilution: 0.2 µg /test.
Protocol
The cells were incubated in 5 %BSA to block non-specific protein-protein interactions for 30 min at room temperature .Cells stained with Primary Antibody for 30 min at room temperature. The secondary antibody used for 40 min at room temperature. Acquisition of 20,000 events was performed.

Please note: All products are 'FOR RESEARCH USE ONLY. NOT FOR USE IN DIAGNOSTIC OR THERAPEUTIC PROCEDURES'.