

DNAJA1 Antibody (Center)

Affinity Purified Rabbit Polyclonal Antibody (Pab)

Catalog # AP5849c

Product Information

Application	WB, IHC-P, FC, E
Primary Accession	P31689
Other Accession	P63036 , P63037 , Q5E954 , NP_001530.1
Reactivity	Human
Predicted	Bovine, Mouse, Rat
Host	Rabbit
Clonality	Polyclonal
Isotype	Rabbit IgG
Clone Names	RB21703
Calculated MW	44868
Antigen Region	294-323

Additional Information

Gene ID	3301
Other Names	DnaJ homolog subfamily A member 1, DnaJ protein homolog 2, HSDJ, Heat shock 40 kDa protein 4, Heat shock protein J2, HSJ-2, Human DnaJ protein 2, hDj-2, DNAJA1, DNAJ2, HDJ2, HSJ2, HSPF4
Target/Specificity	This DNAJA1 antibody is generated from rabbits immunized with a KLH conjugated synthetic peptide between 294-323 amino acids from the Central region of human DNAJA1.
Dilution	WB~~1:1000 IHC-P~~1:100~500 FC~~1:10~50 E~~Use at an assay dependent concentration.
Format	Purified polyclonal antibody supplied in PBS with 0.09% (W/V) sodium azide. This antibody is purified through a protein A column, followed by peptide affinity purification.
Storage	Maintain refrigerated at 2-8°C for up to 2 weeks. For long term storage store at -20°C in small aliquots to prevent freeze-thaw cycles.
Precautions	DNAJA1 Antibody (Center) is for research use only and not for use in diagnostic or therapeutic procedures.

Protein Information

Name	DNAJA1
-------------	--------

Synonyms

DNAJ2, HDJ2, HSJ2, HSPF4

Function

Co-chaperone for HSPA8/Hsc70 (PubMed: [10816573](#)). Stimulates ATP hydrolysis, but not the folding of unfolded proteins mediated by HSPA1A (in vitro) (PubMed:[24318877](#)). Plays a role in protein transport into mitochondria via its role as co-chaperone. Functions as a co- chaperone for HSPA1B and negatively regulates the translocation of BAX from the cytosol to mitochondria in response to cellular stress, thereby protecting cells against apoptosis (PubMed:[14752510](#)). Promotes apoptosis in response to cellular stress mediated by exposure to anisomycin or UV (PubMed:[24512202](#)).

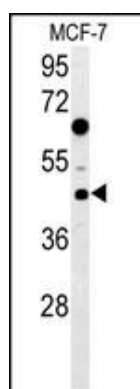
Cellular Location

Membrane; Lipid- anchor. Cytoplasm. Microsome. Nucleus. Cytoplasm, perinuclear region. Mitochondrion Note=Primarily associated with microsomes. A minor proportion is associated with mitochondria (By similarity). Primarily cytoplasmic. A minor proportion is associated with nuclei.

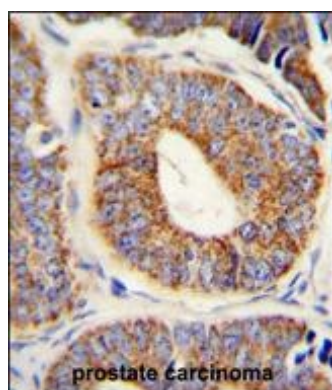
Tissue Location

Ubiquitous. Isoform 2 is highly expressed in testis and lung, but detected at low levels in thymus, prostate, colon and liver.

Images

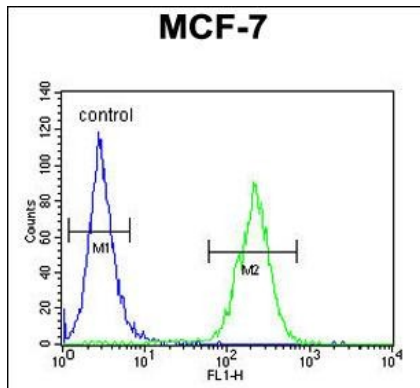
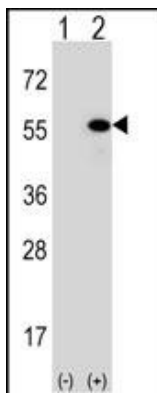


DNAJA1 Antibody (Center) (Cat. #AP5849c) western blot analysis in MCF-7 cell line lysates (35ug/lane). This demonstrates the DNAJA1 antibody detected the DNAJA1 protein (arrow).



DNAJA1 Antibody (Center) (Cat. #AP5849c) immunohistochemistry analysis in formalin fixed and paraffin embedded human prostate carcinoma followed by peroxidase conjugation of the secondary antibody and DAB staining. This data demonstrates the use of the DNAJA1 Antibody (Center) for immunohistochemistry. Clinical relevance has not been evaluated.

Western blot analysis of DNAJA1 (arrow) using rabbit polyclonal DNAJA1 Antibody (Center) (Cat. #AP5849c). 293 cell lysates (2 ug/lane) either nontransfected (Lane 1) or transiently transfected (Lane 2) with the DNAJA1 gene.



DNAJA1 Antibody (Center) (Cat. #AP5849c) flow cytometric analysis of MCF-7 cells (right histogram) compared to a negative control cell (left histogram). FITC-conjugated goat-anti-rabbit secondary antibodies were used for the analysis.

Please note: All products are 'FOR RESEARCH USE ONLY. NOT FOR USE IN DIAGNOSTIC OR THERAPEUTIC PROCEDURES'.