

MAGEB1 Rabbit pAb

MAGEB1 Rabbit pAb

Catalog # AP58520

Product Information

Application	IHC-P, IHC-F, IF
Primary Accession	Q96M61
Reactivity	Dog
Predicted	Human, Mouse, Rat, Pig, Horse, Sheep
Host	Rabbit
Clonality	Polyclonal
Calculated MW	38533
Physical State	Liquid
Immunogen	KLH conjugated synthetic peptide derived from human MAGEB1
Epitope Specificity	1-100/347
Isotype	IgG
Purity	affinity purified by Protein A

Buffer 0.01M TBS (pH7.4) with 1% BSA, 0.02% Proclin300 and 50% Glycerol.**SIMILARITY** Contains 1 MAGE domain.**Important Note** This product as supplied is intended for research use only, not for use in human, therapeutic or diagnostic applications.**Background Descriptions** MAGEB1 is a member of the MAGEB gene family. The members of this family have their entire coding sequences located in the last exon, and the encoded proteins show 50 to 68% sequence identity to each other. The promoters and first exons of the MAGEB genes show considerable variability, suggesting that the existence of this gene family enables the same function to be expressed under different transcriptional controls. This gene is localized in the DSS (dosage-sensitive sex reversal) critical region, and expressed in testis and in a significant fraction of tumors of various histological types. This gene and other MAGEB members are clustered on chromosome Xp22-p21.

Additional Information

Gene ID	286514
Other Names	Melanoma-associated antigen B18, MAGE-B18 antigen, MAGEB18
Target/Specificity	Expressed only in testis.
Dilution	IHC-P=1:100-500,IHC-F=1:100-500,IF=1:100-500
Storage	Store at -20 °C for one year. Avoid repeated freeze/thaw cycles. When reconstituted in sterile pH 7.4 0.01M PBS or diluent of antibody the antibody is stable for at least two weeks at 2-4 °C.

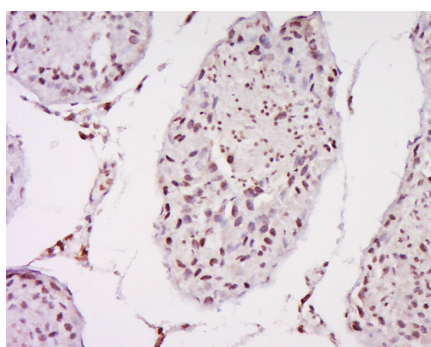
Protein Information

Name	MAGEB18
Function	May enhance ubiquitin ligase activity of RING-type zinc finger-containing E3 ubiquitin-protein ligases. Proposed to act through recruitment and/or stabilization of the Ubl-conjugating enzyme (E2) at the E3:substrate complex.
Cellular Location	Cytoplasm {ECO:0000250 UniProtKB:Q8BQR7}.

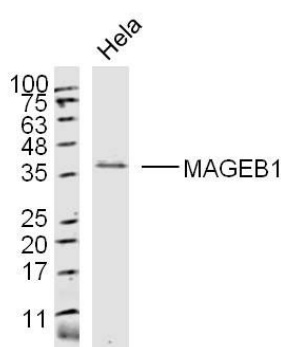
Background

MAGEB1 is a member of the MAGEB gene family. The members of this family have their entire coding sequences located in the last exon, and the encoded proteins show 50 to 68% sequence identity to each other. The promoters and first exons of the MAGEB genes show considerable variability, suggesting that the existence of this gene family enables the same function to be expressed under different transcriptional controls. This gene is localized in the DSS (dosage-sensitive sex reversal) critical region, and expressed in testis and in a significant fraction of tumors of various histological types. This gene and other MAGEB members are clustered on chromosome Xp22-p21.

Images

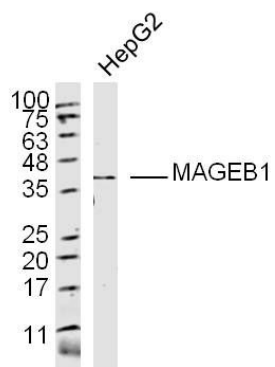


Tissue/cell: Dog testis tissue; 4% Paraformaldehyde-fixed and paraffin-embedded;
Antigen retrieval: citrate buffer (0.01M, pH 6.0), Boiling bathing for 15min; Block endogenous peroxidase by 3% Hydrogen peroxide for 30min; Blocking buffer (normal goat serum,C-0005) at 37 °C for 20 min;
Incubation: Anti-MAGEB1 Polyclonal Antibody, Unconjugated(AP58520) 1:500, overnight at 4 °C, followed by conjugation to the secondary antibody(SP-0023) and DAB(C-0010) staining



Sample: HeLa Cell (Human) Lysate at 40 ug
Primary: Anti-MAGEB1 (AP58520) at 1/300 dilution
Secondary: IRDye800CW Goat Anti-Rabbit IgG at 1/20000 dilution
Predicted band size: 39 kD
Observed band size: 39 kD

Sample: HepG2 Cell (Human) Lysate at 40 ug
Primary: Anti-MAGEB1 (AP58520) at 1/300 dilution
Secondary: IRDye800CW Goat Anti-Rabbit IgG at 1/20000 dilution
Predicted band size: 39 kD
Observed band size: 39 kD



Please note: All products are 'FOR RESEARCH USE ONLY. NOT FOR USE IN DIAGNOSTIC OR THERAPEUTIC PROCEDURES'.