

PMPCB Rabbit pAb

PMPCB Rabbit pAb

Catalog # AP58568

Product Information

Application	IHC-P, IHC-F, IF
Reactivity	Rat
Predicted	Human, Mouse
Host	Rabbit
Clonality	Polyclonal
Calculated MW	49 KDa
Physical State	Liquid
Immunogen	KLH conjugated synthetic peptide derived from human PMPCB
Epitope Specificity	181-280/489
Isotype	IgG
Purity	affinity purified by Protein A
Buffer	0.01M TBS (pH7.4) with 1% BSA, 0.02% Proclin300 and 50% Glycerol.
SUBCELLULAR LOCATION	Mitochondrion matrix.
SIMILARITY	Belongs to the peptidase M16 family.
SUBUNIT	Heterodimer of alpha and beta subunits.
Important Note	This product as supplied is intended for research use only, not for use in human, therapeutic or diagnostic applications.
Background Descriptions	PMPCB is a member of the peptidase M16 family and encodes a protein with a zinc-binding motif. PMPCB is located in the mitochondrial matrix and catalyzes the cleavage of the leader peptides of precursor proteins newly imported into the mitochondria, though it only functions as part of a heterodimeric complex.

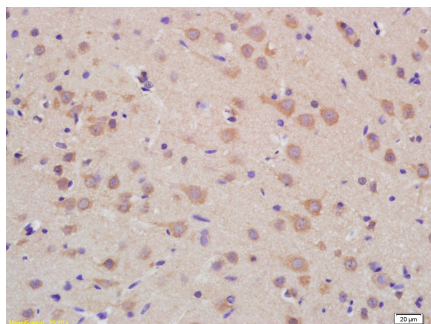
Additional Information

Other Names	Mitochondrial-processing peptidase subunit beta, 3.4.24.64, Beta-MPP, P-52, PMPCB, MPPB
Dilution	IHC-P=1:100-500,IHC-F=1:100-500,IF=1:100-500
Storage	Store at -20 °C for one year. Avoid repeated freeze/thaw cycles. When reconstituted in sterile pH 7.4 0.01M PBS or diluent of antibody the antibody is stable for at least two weeks at 2-4 °C.

Background

PMPCB is a member of the peptidase M16 family and encodes a protein with a zinc-binding motif. PMPCB is located in the mitochondrial matrix and catalyzes the cleavage of the leader peptides of precursor proteins newly imported into the mitochondria, though it only functions as part of a heterodimeric complex.

Images



Tissue/cell: rat brain tissue; 4% Paraformaldehyde-fixed and paraffin-embedded;
Antigen retrieval: citrate buffer (0.01M, pH 6.0), Boiling bathing for 15min; Block endogenous peroxidase by 3% Hydrogen peroxide for 30min; Blocking buffer (normal goat serum,C-0005) at 37°C for 20 min;
Incubation: Anti-PMPCB Polyclonal Antibody, Unconjugated(AP58568) 1:200, overnight at 4°C, followed by conjugation to the secondary antibody(SP-0023) and DAB(C-0010) staining

Please note: All products are 'FOR RESEARCH USE ONLY. NOT FOR USE IN DIAGNOSTIC OR THERAPEUTIC PROCEDURES'.