

# RASD2 Polyclonal Antibody

Purified Rabbit Polyclonal Antibody (Pab)

Catalog # AP58569

## Product Information

---

<b>Application</b>	WB, IHC-P, IHC-F, IF, E
<b>Primary Accession</b>	<a href="#">Q96D21</a>
<b>Reactivity</b>	Rat, Dog
<b>Host</b>	Rabbit
<b>Clonality</b>	Polyclonal
<b>Calculated MW</b>	30366
<b>Physical State</b>	Liquid
<b>Immunogen</b>	KLH conjugated synthetic peptide derived from human RASD2
<b>Epitope Specificity</b>	201-266/266
<b>Isotype</b>	IgG
<b>Purity</b>	affinity purified by Protein A
<b>Buffer</b>	0.01M TBS (pH7.4) with 1% BSA, 0.02% Proclin300 and 50% Glycerol.
<b>SUBCELLULAR LOCATION</b>	Cell membrane; Lipid-anchor.
<b>SIMILARITY</b>	Belongs to the small GTPase superfamily. RasD family.
<b>SUBUNIT</b>	Monomer (Potential). Interacts with PIK3CA and UBE2I. Interacts with GNB1, GNB2 and GNB3. Interacts with HTT; interacts with mutant HTT (mHTT) with a much higher affinity than wild type HTT.
<b>Post-translational modifications</b>	Farnesylated. Farnesylation is required for membrane targeting.
<b>Important Note</b>	This product as supplied is intended for research use only, not for use in human, therapeutic or diagnostic applications.
<b>Background Descriptions</b>	GTPase signaling protein that binds to and hydrolyzes GTP. Regulates signaling pathways involving G-proteins-coupled receptor and heterotrimeric proteins such as GNB1, GNB2 and GNB3. May be involved in selected striatal competencies, mainly locomotor activity and motor coordination.

## Additional Information

---

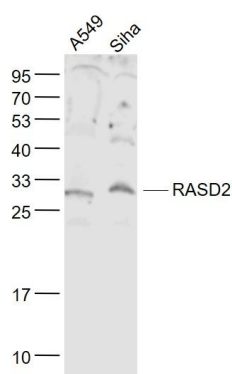
<b>Gene ID</b>	23551
<b>Other Names</b>	GTP-binding protein Rhes, Ras homolog enriched in striatum, Tumor endothelial marker 2, RASD2, TEM2
<b>Target/Specificity</b>	Pancreatic endocrine cells (islets of Langerhans).
<b>Dilution</b>	WB=1:500-2000,IHC-P=1:100-500,IHC-F=1:100-500,IF=1:100-500,ELISA=1:5000-10000
<b>Format</b>	0.01M TBS(pH7.4) with 1% BSA, 0.09% (W/V) sodium azide and 50% Glyce
<b>Storage</b>	Store at -20 °C for one year. Avoid repeated freeze/thaw cycles. When

reconstituted in sterile pH 7.4 0.01M PBS or diluent of antibody the antibody is stable for at least two weeks at 2-4 °C.

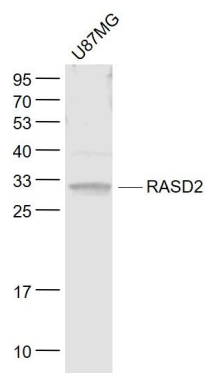
## Protein Information

<b>Name</b>	RASD2
<b>Synonyms</b>	TEM2
<b>Function</b>	GTPase signaling protein that binds to and hydrolyzes GTP. Regulates signaling pathways involving G-proteins-coupled receptor and heterotrimeric proteins such as GNB1, GNB2 and GNB3. May be involved in selected striatal competencies, mainly locomotor activity and motor coordination.
<b>Cellular Location</b>	Cell membrane; Lipid-anchor
<b>Tissue Location</b>	Pancreatic endocrine cells (islets of Langerhans).

## Images



Sample:  
A549(Human) Cell Lysate at 30 ug  
SiHa(Human) Cell Lysate at 30 ug  
Primary: Anti- RASD2 (AP58569) at 1/1000 dilution  
Secondary: IRDye800CW Goat Anti-Rabbit IgG at 1/20000 dilution  
Predicted band size: 30 kD  
Observed band size: 30 kD



Sample:  
U87MG(Human) Cell Lysate at 30 ug  
Primary: Anti- RASD2 (AP58569) at 1/1000 dilution  
Secondary: IRDye800CW Goat Anti-Rabbit IgG at 1/20000 dilution  
Predicted band size: 30 kD  
Observed band size: 30 kD

Please note: All products are 'FOR RESEARCH USE ONLY. NOT FOR USE IN DIAGNOSTIC OR THERAPEUTIC PROCEDURES'.