

# RASGRP1 Antibody (Center)

Affinity Purified Rabbit Polyclonal Antibody (Pab)

Catalog # AP5856C

## Product Information

---

<b>Application</b>	WB, IHC-P, FC, E
<b>Primary Accession</b>	<a href="#">Q95267</a>
<b>Other Accession</b>	<a href="#">Q9R1K8</a> , <a href="#">Q9Z1S3</a> , <a href="#">NP_005730.2</a> , <a href="#">NP_001122074.1</a>
<b>Reactivity</b>	Human
<b>Predicted</b>	Mouse, Rat
<b>Host</b>	Rabbit
<b>Clonality</b>	Polyclonal
<b>Isotype</b>	Rabbit IgG
<b>Clone Names</b>	RB21940
<b>Calculated MW</b>	90402
<b>Antigen Region</b>	495-521

## Additional Information

---

<b>Gene ID</b>	10125
<b>Other Names</b>	RAS guanyl-releasing protein 1, Calcium and DAG-regulated guanine nucleotide exchange factor II, CalDAG-GEFII, Ras guanyl-releasing protein, RASGRP1, RASGRP
<b>Target/Specificity</b>	This RASGRP1 antibody is generated from rabbits immunized with a KLH conjugated synthetic peptide between 495-521 amino acids from the Central region of human RASGRP1.
<b>Dilution</b>	WB~~1:1000 IHC-P~~1:100~500 FC~~1:10~50 E~~Use at an assay dependent concentration.
<b>Format</b>	Purified polyclonal antibody supplied in PBS with 0.05% (V/V) Proclin 300. This antibody is prepared by Saturated Ammonium Sulfate (SAS) precipitation followed by dialysis against PBS.
<b>Storage</b>	Maintain refrigerated at 2-8°C for up to 2 weeks. For long term storage store at -20°C in small aliquots to prevent freeze-thaw cycles.
<b>Precautions</b>	RASGRP1 Antibody (Center) is for research use only and not for use in diagnostic or therapeutic procedures.

## Protein Information

---

<b>Name</b>	RASGRP1
-------------	---------

## Synonyms

RASGRP

## Function

Functions as a calcium- and diacylglycerol (DAG)-regulated nucleotide exchange factor specifically activating Ras through the exchange of bound GDP for GTP (PubMed:[15899849](#), PubMed:[23908768](#), PubMed:[27776107](#), PubMed:[29155103](#)). Activates the Erk/MAP kinase cascade (PubMed:[15899849](#)). Regulates T-cell/B-cell development, homeostasis and differentiation by coupling T-lymphocyte/B-lymphocyte antigen receptors to Ras (PubMed:[10807788](#), PubMed:[12839994](#), PubMed:[27776107](#), PubMed:[29155103](#)). Regulates NK cell cytotoxicity and ITAM-dependent cytokine production by activation of Ras-mediated ERK and JNK pathways (PubMed:[19933860](#)). Functions in mast cell degranulation and cytokine secretion, regulating FcERI-evoked allergic responses. May also function in differentiation of other cell types (PubMed:[12845332](#)).

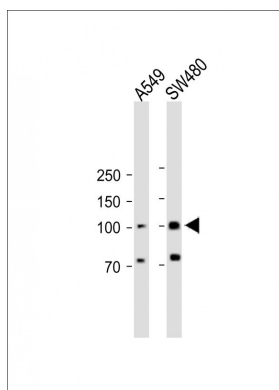
## Cellular Location

Cytoplasm, cytosol. Cell membrane; Peripheral membrane protein. Golgi apparatus membrane; Peripheral membrane protein. Endoplasmic reticulum membrane; Peripheral membrane protein Note=Found both in the cytosol and associated with membranes Relocalization to the cell membrane upon activation is F-actin- dependent. Translocates to the Golgi in response to phorbol ester or nerve growth factor. Localizes to somata and dendrites but not to axons of hippocampal pyramidal cells (By similarity).

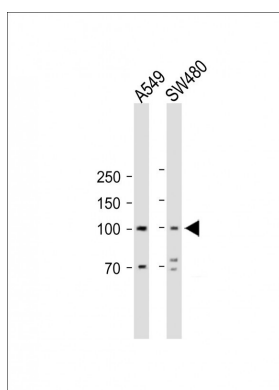
## Tissue Location

Expressed in brain with higher expression in cerebellum, cerebral cortex and amygdala. Expressed in the hematopoietic system. Expressed in T-cells (at protein level) Expressed in NK cells (at protein level) (PubMed:[19933860](#))

## Images

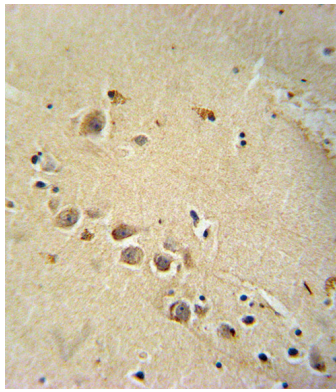


All lanes : Anti-RASGRP1 Antibody (Center) 1:1000 dilution  
Lane 1: A549 whole cel lysate Lane 2: SW480 whole cel lysate  
Lysates/proteins at 20 µg per lane. Secondary Goat Anti-Rabbit IgG, (H+L), Peroxidase conjugated (ASP1615) at 1/15000 dilution. Observed band size : 100kDa  
Blocking/Dilution buffer: 5% NFDM/TBST.

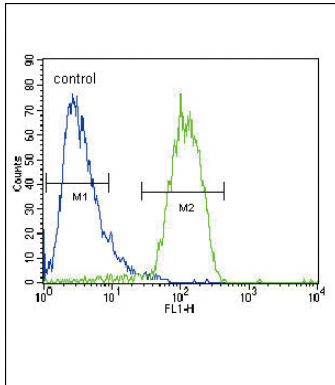


All lanes : Anti-RASGRP1 Antibody (Center) 1:1000 dilution  
Lane 1: A549 whole cel lysate Lane 2: SW480 whole cel lysate  
Lysates/proteins at 20 µg per lane. Secondary Goat Anti-Rabbit IgG, (H+L), Peroxidase conjugated (ASP1615) at 1/15000 dilution. Observed band size : 100kDa  
Blocking/Dilution buffer: 5% NFDM/TBST.

RASGRP1 Antibody (Center) (Cat. #AP5856c)  
immunohistochemistry analysis in formalin fixed and paraffin embedded human brain tissue followed by



peroxidase conjugation of the secondary antibody and DAB staining. This data demonstrates the use of the RASGRP1 Antibody (Center) for immunohistochemistry. Clinical relevance has not been evaluated.



RASGRP1 Antibody (Center) (Cat. #AP5856c) flow cytometric analysis of HepG2 cells (right histogram) compared to a negative control cell (left histogram). FITC-conjugated goat-anti-rabbit secondary antibodies were used for the analysis.

## Citations

- [RasGRP1 induces autophagy and transformation-associated changes in primary human keratinocytes](#)

Please note: All products are 'FOR RESEARCH USE ONLY. NOT FOR USE IN DIAGNOSTIC OR THERAPEUTIC PROCEDURES'.