

SPANX Polyclonal Antibody

Purified Rabbit Polyclonal Antibody (Pab)

Catalog # AP58572

Product Information

Application	WB, IHC-P, IHC-F, IF, E
Primary Accession	Q9NY87
Reactivity	Human
Host	Rabbit
Clonality	Polyclonal
Calculated MW	10982
Physical State	Liquid
Immunogen	KLH conjugated synthetic peptide derived from human SPANX
Epitope Specificity	21-97/97
Isotype	IgG
Purity	affinity purified by Protein A
Buffer	0.01M TBS (pH7.4) with 1% BSA, 0.02% Proclin300 and 50% Glycerol.
SUBCELLULAR LOCATION	Cytoplasm. Nucleus. Note=Associated with nuclear craters.
SIMILARITY	Belongs to the SPAN-X family.
Important Note	This product as supplied is intended for research use only, not for use in human, therapeutic or diagnostic applications.
Background Descriptions	Tissue specificity: Detected in testis, melanoma and bladder carcinoma.

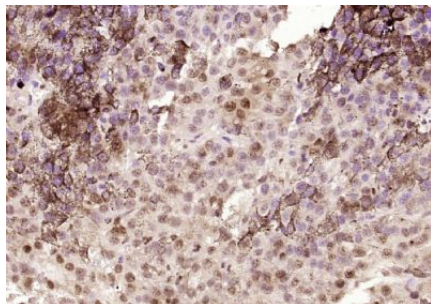
Additional Information

Gene ID	64663
Other Names	Sperm protein associated with the nucleus on the X chromosome C, Cancer/testis antigen 11.3, CT11.3 {ECO:0000312 HGNC:HGNC:14331}, Cancer/testis-associated protein CTp11 {ECO:0000312 EMBL:CAB75344.1}, Nuclear-associated protein SPAN-Xc, SPANX-C {ECO:0000312 EMBL:AAW47309.1}, SPANX family member C, SPANXC
Target/Specificity	Detected in testis, melanoma and bladder carcinoma.
Dilution	WB=1:500-2000,IHC-P=1:100-500,IHC-F=1:100-500,IF=1:100-500,ELISA=1:5000-10000
Format	0.01M TBS(pH7.4) with 1% BSA, 0.09% (W/V) sodium azide and 50% Glyce
Storage	Store at -20 °C for one year. Avoid repeated freeze/thaw cycles. When reconstituted in sterile pH 7.4 0.01M PBS or diluent of antibody the antibody is stable for at least two weeks at 2-4 °C.

Protein Information

Name	SPANXC
Cellular Location	Cytoplasm. Nucleus. Note=Associated with nuclear craters
Tissue Location	Detected in testis, melanoma and bladder carcinoma.

Images



Paraformaldehyde-fixed, paraffin embedded (Human melanoma); Antigen retrieval by boiling in sodium citrate buffer (pH6.0) for 15min; Block endogenous peroxidase by 3% hydrogen peroxide for 20 minutes; Blocking buffer (normal goat serum) at 37°C for 30min; Antibody incubation with (SPANX) Polyclonal Antibody, Unconjugated (AP58572) at 1:400 overnight at 4°C, followed by operating according to SP Kit(Rabbit) (sp-0023) instructions and DAB staining.

Please note: All products are 'FOR RESEARCH USE ONLY. NOT FOR USE IN DIAGNOSTIC OR THERAPEUTIC PROCEDURES'.