

# LRRC52 Antibody (C-term)

Affinity Purified Rabbit Polyclonal Antibody (Pab)

Catalog # AP5857b

## Product Information

---

Application	WB, E
Primary Accession	<a href="#">Q8N7C0</a>
Other Accession	<a href="#">NP_001005214.2</a>
Reactivity	Human
Host	Rabbit
Clonality	Polyclonal
Isotype	Rabbit IgG
Clone Names	RB21948
Calculated MW	35126
Antigen Region	267-296

## Additional Information

---

Gene ID	440699
Other Names	Leucine-rich repeat-containing protein 52, BK channel auxiliary gamma subunit LRRC52, LRRC52
Target/Specificity	This LRRC52 antibody is generated from rabbits immunized with a KLH conjugated synthetic peptide between 267-296 amino acids from the C-terminal region of human LRRC52.
Dilution	WB~~1:1000 E~~Use at an assay dependent concentration.
Format	Purified polyclonal antibody supplied in PBS with 0.09% (W/V) sodium azide. This antibody is purified through a protein A column, followed by peptide affinity purification.
Storage	Maintain refrigerated at 2-8°C for up to 2 weeks. For long term storage store at -20°C in small aliquots to prevent freeze-thaw cycles.
Precautions	LRRC52 Antibody (C-term) is for research use only and not for use in diagnostic or therapeutic procedures.

## Protein Information

---

Name	LRRC52
Function	Auxiliary protein of the large-conductance, voltage and calcium-activated potassium channel (BK alpha). Modulates gating properties by producing a marked shift in the BK channel's voltage dependence of activation in the

hyperpolarizing direction, and in the absence of calcium. KCNU1 channel auxiliary protein. Modulates KCNU1 gating properties.

**Cellular Location**

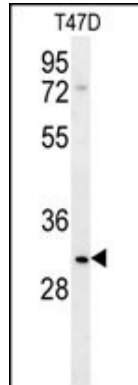
Cell membrane; Single-pass membrane protein. Note=Expression at the cell surface may require the presence of KCNU1

**Tissue Location**

Mainly expressed in testis and skeletal muscle.

## Images

---



LRRC52 Antibody (C-term) (Cat. #AP5857b) western blot analysis in T47D cell line lysates (35ug/lane). This demonstrates the LRRC52 antibody detected the LRRC52 protein (arrow).

Please note: All products are 'FOR RESEARCH USE ONLY. NOT FOR USE IN DIAGNOSTIC OR THERAPEUTIC PROCEDURES'.