

CDC2L6 Rabbit pAb

CDC2L6 Rabbit pAb

Catalog # AP58585

Product Information

Application	IHC-P, IHC-F, IF
Primary Accession	Q9BWU1
Reactivity	Mouse
Predicted	Human, Rat, Horse, Rabbit, Monkey, Chimpanzee
Host	Rabbit
Clonality	Polyclonal
Calculated MW	56802
Physical State	Liquid
Immunogen	KLH conjugated synthetic peptide derived from human CDC2L6
Epitope Specificity	21-120/502
Isotype	IgG
Purity	affinity purified by Protein A
Buffer	0.01M TBS (pH7.4) with 1% BSA, 0.02% Proclin300 and 50% Glycerol.
SIMILARITY	Belongs to the protein kinase superfamily. CMGC Ser/Thr protein kinase family. CDC2/CDKX subfamily. Contains 1 protein kinase domain.
Important Note	This product as supplied is intended for research use only, not for use in human, therapeutic or diagnostic applications.
Background Descriptions	This gene encodes a protein that is one of the components of the Mediator coactivator complex. The Mediator complex is a multiprotein complex required for transcriptional activation by DNA binding transcription factors of genes transcribed by RNA polymerase II. The protein encoded by this gene is similar to cyclin-dependent kinase 8 which can also be a component of the Mediator complex.

Additional Information

Gene ID	23097
Other Names	Cyclin-dependent kinase 19, 2.7.11.22, CDC2-related protein kinase 6, Cell division cycle 2-like protein kinase 6, Cell division protein kinase 19, Cyclin-dependent kinase 11, Death-preventing kinase, CDK19, CDC2L6, CDK11, KIAA1028
Dilution	IHC-P=1:100-500,IHC-F=1:100-500,IF=1:100-500
Storage	Store at -20 °C for one year. Avoid repeated freeze/thaw cycles. When reconstituted in sterile pH 7.4 0.01M PBS or diluent of antibody the antibody is stable for at least two weeks at 2-4 °C.

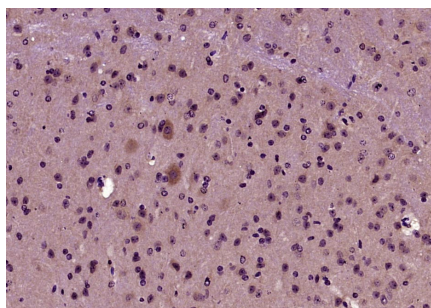
Protein Information

Name	CDK19
Synonyms	CDC2L6, CDK11, KIAA1028
Cellular Location	Cytoplasm. Cytoplasm, perinuclear region. Nucleus

Background

This gene encodes a protein that is one of the components of the Mediator coactivator complex. The Mediator complex is a multiprotein complex required for transcriptional activation by DNA binding transcription factors of genes transcribed by RNA polymerase II. The protein encoded by this gene is similar to cyclin-dependent kinase 8 which can also be a component of the Mediator complex.

Images



Paraformaldehyde-fixed, paraffin embedded (Mouse brain); Antigen retrieval by boiling in sodium citrate buffer (pH6.0) for 15min; Block endogenous peroxidase by 3% hydrogen peroxide for 20 minutes; Blocking buffer (normal goat serum) at 37°C for 30min; Antibody incubation with (CDC2L6) Polyclonal Antibody, Unconjugated (AP58585) at 1:400 overnight at 4°C, followed by operating according to SP Kit(Rabbit) (sp-0023) instructions and DAB staining.

Please note: All products are 'FOR RESEARCH USE ONLY. NOT FOR USE IN DIAGNOSTIC OR THERAPEUTIC PROCEDURES'.