

# RNF122 Polyclonal Antibody

Purified Rabbit Polyclonal Antibody (Pab)

Catalog # AP58682

## Product Information

---

<b>Application</b>	WB, IHC-P, IHC-F, IF, E
<b>Primary Accession</b>	<a href="#">Q9H9V4</a>
<b>Reactivity</b>	Rat, Pig, Dog, Bovine
<b>Host</b>	Rabbit
<b>Clonality</b>	Polyclonal
<b>Calculated MW</b>	17475
<b>Physical State</b>	Liquid
<b>Immunogen</b>	KLH conjugated synthetic peptide derived from human RNF122
<b>Epitope Specificity</b>	71-155/155
<b>Isotype</b>	IgG
<b>Purity</b>	affinity purified by Protein A
<b>Buffer</b>	0.01M TBS (pH7.4) with 1% BSA, 0.02% Proclin300 and 50% Glycerol.
<b>SUBCELLULAR LOCATION</b>	Golgi apparatus. Endoplasmic reticulum. Membrane; Single-pass membrane protein (Potential).
<b>SIMILARITY</b>	Contains 1 RING-type zinc finger.
<b>Important Note</b>	This product as supplied is intended for research use only, not for use in human, therapeutic or diagnostic applications.
<b>Background Descriptions</b>	May induce necrosis and apoptosis. May play a role in cell viability.

## Additional Information

---

<b>Gene ID</b>	79845
<b>Other Names</b>	RING finger protein 122, RNF122
<b>Target/Specificity</b>	Widely expressed in several tissues and cell lines.
<b>Dilution</b>	WB=1:500-2000,IHC-P=1:100-500,IHC-F=1:100-500,IF=1:100-500,ELISA=1:5000-10000
<b>Format</b>	0.01M TBS(pH7.4) with 1% BSA, 0.09% (W/V) sodium azide and 50% Glyce
<b>Storage</b>	Store at -20 °C for one year. Avoid repeated freeze/thaw cycles. When reconstituted in sterile pH 7.4 0.01M PBS or diluent of antibody the antibody is stable for at least two weeks at 2-4 °C.

## Protein Information

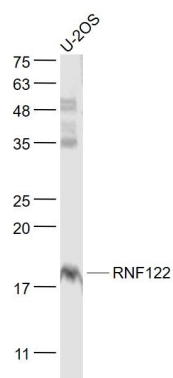
---

<b>Name</b>	RNF122
-------------	--------

<b>Function</b>	May induce necrosis and apoptosis. May play a role in cell viability.
<b>Cellular Location</b>	Golgi apparatus. Endoplasmic reticulum. Membrane; Single-pass membrane protein
<b>Tissue Location</b>	Widely expressed in several tissues and cell lines.

## Images

---



Sample:  
 U-2OS(Human) Cell Lysate at 30 ug  
 Primary: Anti- RNF122 (AP58682) at 1/1000 dilution  
 Secondary: IRDye800CW Goat Anti-Rabbit IgG at 1/20000 dilution  
 Predicted band size: 17 kD  
 Observed band size: 18 kD

Please note: All products are 'FOR RESEARCH USE ONLY. NOT FOR USE IN DIAGNOSTIC OR THERAPEUTIC PROCEDURES'.