

EAF2 Polyclonal Antibody

Purified Rabbit Polyclonal Antibody (Pab)

Catalog # AP58703

Product Information

Application	IHC-P, IHC-F, IF, E
Primary Accession	Q96CJ1
Reactivity	Rat, Dog, Bovine
Host	Rabbit
Clonality	Polyclonal
Calculated MW	28792
Physical State	Liquid
Immunogen	KLH conjugated synthetic peptide derived from human EAF2
Epitope Specificity	65-160/260
Purity	affinity purified by Protein A
Buffer	0.01M TBS (pH7.4) with 1% BSA, 0.02% Proclin300 and 50% Glycerol.
SUBCELLULAR LOCATION	Nucleus speckle.
SIMILARITY	Belongs to the EAF family.
SUBUNIT	Isoform 1 and isoform 2 interact with TCEA1. Interacts with ELL and ELL2.
Important Note	This product as supplied is intended for research use only, not for use in human, therapeutic or diagnostic applications.
Background Descriptions	Acts as a transcriptional transactivator of TCEA1 elongation activity (By similarity). Acts as a transcriptional transactivator of ELL and ELL2 elongation activities. Potent inducer of apoptosis in prostatic and non-prostatic cell lines. Inhibits prostate tumor growth in vivo.

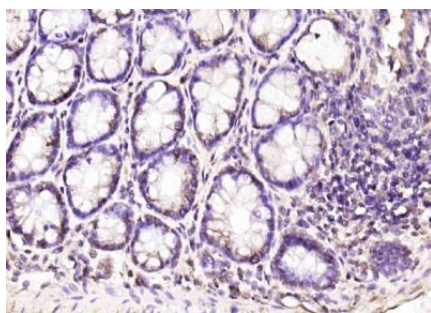
Additional Information

Gene ID	55840
Other Names	ELL-associated factor 2, Testosterone-regulated apoptosis inducer and tumor suppressor protein, EAF2, TRAITS
Target/Specificity	Expressed in heart, brain, placenta, lung, skeletal muscle, kidney, pancreas, spleen, prostate, testis, small intestine, colon, adrenal, bone marrow, lymph node, spinal gland, stomach, thyroid, trachea, thymus, liver and leukocytes.
Dilution	IHC-P=1:100-500,IHC-F=1:100-500,IF=1:100-500,ELISA=1:5000-10000
Format	0.01M TBS(pH7.4) with 1% BSA, 0.09% (W/V) sodium azide and 50% Glyce
Storage	Store at -20 °C for one year. Avoid repeated freeze/thaw cycles. When reconstituted in sterile pH 7.4 0.01M PBS or diluent of antibody the antibody is stable for at least two weeks at 2-4 °C.

Protein Information

Name	EAF2
Synonyms	TRAITS
Function	Acts as a transcriptional transactivator of TCEA1 elongation activity (By similarity). Acts as a transcriptional transactivator of ELL and ELL2 elongation activities. Potent inducer of apoptosis in prostatic and non-prostatic cell lines. Inhibits prostate tumor growth in vivo.
Cellular Location	Nucleus speckle
Tissue Location	Expressed in heart, brain, placenta, lung, skeletal muscle, kidney, pancreas, spleen, prostate, testis, small intestine, colon, adrenal, bone marrow, lymph node, spinal gland, stomach, thyroid, trachea, thymus, liver and leukocytes

Images



Paraformaldehyde-fixed, paraffin embedded (rat colon); Antigen retrieval by boiling in sodium citrate buffer (pH6.0) for 15min; Block endogenous peroxidase by 3% hydrogen peroxide for 20 minutes; Blocking buffer (normal goat serum) at 37°C for 30min; Antibody incubation with (EAF2) Polyclonal Antibody, Unconjugated (AP58703) at 1:200 overnight at 4°C, followed by operating according to SP Kit(Rabbit) (sp-0023) instructions and DAB staining.

Please note: All products are 'FOR RESEARCH USE ONLY. NOT FOR USE IN DIAGNOSTIC OR THERAPEUTIC PROCEDURES'.