

CENPP Polyclonal Antibody

Purified Rabbit Polyclonal Antibody (Pab)

Catalog # AP58723

Product Information

Application	WB, IHC-P, IHC-F, IF, E
Primary Accession	Q6IPU0
Reactivity	Rat, Bovine
Host	Rabbit
Clonality	Polyclonal
Calculated MW	33165
Physical State	Liquid
Immunogen	KLH conjugated synthetic peptide derived from human CENPP
Epitope Specificity	81-180/288
Isotype	IgG
Purity	affinity purified by Protein A
Buffer	0.01M TBS (pH7.4) with 1% BSA, 0.02% Proclin300 and 50% Glycerol.
SUBCELLULAR LOCATION	Nucleus. Chromosome, centromere. Note=Localizes exclusively in the centromeres. The CENPA-CAD complex is probably recruited on centromeres by the CENPA-NAC complex.
SUBUNIT	Component of the CENPA-CAD complex, composed of CENPI, CENPK, CENPL, CENPO, CENPP, CENPQ, CENPR and CENPS. The CENPA-CAD complex interacts with the CENPA-NAC complex, at least composed of CENPA, CENPC, CENPH, CENPM, CENPN, CENPT and MLF1IP/CENPU.
Important Note	This product as supplied is intended for research use only, not for use in human, therapeutic or diagnostic applications.
Background Descriptions	CENPP is a component of the CENPA-CAD (nucleosome distal) complex, a complex recruited to centromeres which is involved in assembly of kinetochore proteins, mitotic progression and chromosome segregation.

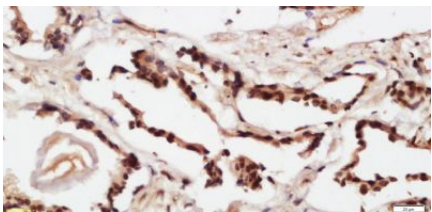
Additional Information

Gene ID	401541
Other Names	Centromere protein P, CENP-P, CENPP
Dilution	WB=1:500-2000,IHC-P=1:100-500,IHC-F=1:100-500,IF=1:100-500,ELISA=1:5000-10000
Format	0.01M TBS(pH7.4) with 1% BSA, 0.09% (W/V) sodium azide and 50% Glyce
Storage	Store at -20 °C for one year. Avoid repeated freeze/thaw cycles. When reconstituted in sterile pH 7.4 0.01M PBS or diluent of antibody the antibody is stable for at least two weeks at 2-4 °C.

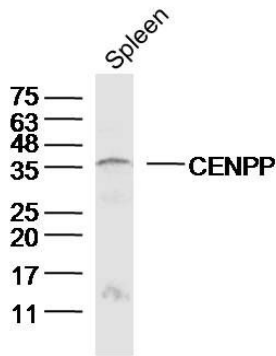
Protein Information

Name	CENPP
Function	Component of the CENPA-CAD (nucleosome distal) complex, a complex recruited to centromeres which is involved in assembly of kinetochore proteins, mitotic progression and chromosome segregation. May be involved in incorporation of newly synthesized CENPA into centromeres via its interaction with the CENPA-NAC complex.
Cellular Location	Nucleus. Chromosome, centromere. Note=Localizes exclusively in the centromeres. The CENPA-CAD complex is probably recruited on centromeres by the CENPA-NAC complex

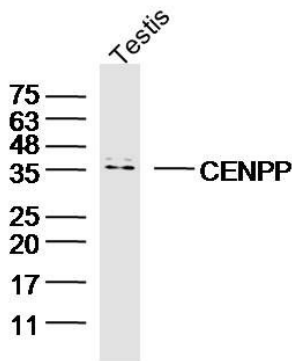
Images



Tissue/cell: human prostate tissue; 4%
Paraformaldehyde-fixed and paraffin-embedded;
Antigen retrieval: citrate buffer (0.01M, pH 6.0), Boiling
bathing for 15min; Block endogenous peroxidase by 3%
Hydrogen peroxide for 30min; Blocking buffer (normal
goat serum,C-0005) at 37°C for 20 min;
Incubation: Anti-CENPP Polyclonal Antibody,
Unconjugated(AP58723) 1:500, overnight at 4°C, followed
by conjugation to the secondary antibody(SP-0023) and
DAB(C-0010) staining



Sample:Spleen (Mouse)Lysate at 40 ug
Primary: Anti-CENPP(AP58723)at 1/300 dilution
Secondary: IRDye800CW Goat Anti-RabbitIgG at
1/20000 dilution
Predicted band size: 33kD
Observed band size: 36kD



Sample:Testis (Mouse)Lysate at 40 ug
Primary: Anti-CENPP(AP58723)at 1/300 dilution
Secondary: IRDye800CW Goat Anti-RabbitIgG at
1/20000 dilution
Predicted band size: 33kD
Observed band size: 35kD

Please note: All products are 'FOR RESEARCH USE ONLY. NOT FOR USE IN DIAGNOSTIC OR THERAPEUTIC PROCEDURES'.