

MIS12 Polyclonal Antibody

Purified Rabbit Polyclonal Antibody (Pab)

Catalog # AP58726

Product Information

Application	WB, IHC-P, IHC-F, IF, E
Primary Accession	Q9H081
Reactivity	Rat, Dog, Bovine
Host	Rabbit
Clonality	Polyclonal
Calculated MW	24140
Physical State	Liquid
Immunogen	KLH conjugated synthetic peptide derived from human MIS12
Epitope Specificity	11-120/205
Isotype	IgG
Purity	affinity purified by Protein A
Buffer	0.01M TBS (pH7.4) with 1% BSA, 0.02% Proclin300 and 50% Glycerol.
SUBCELLULAR LOCATION	Nucleus. Chromosome, centromere, kinetochore. Note=Associated with the kinetochore.
SIMILARITY	Belongs to the mis12 family.
SUBUNIT	Component of the MIS12 complex composed of MIS12, DSN1, NSL1 and PMF1. Also interacts with CASC5, CBX3, CBX5, NDC80 and ZWINT.
Important Note	This product as supplied is intended for research use only, not for use in human, therapeutic or diagnostic applications.
Background Descriptions	MIS12 is part of a complex that plays an essential role in chromosome segregation in vertebrates and contributes to mitotic kinetochore assembly.

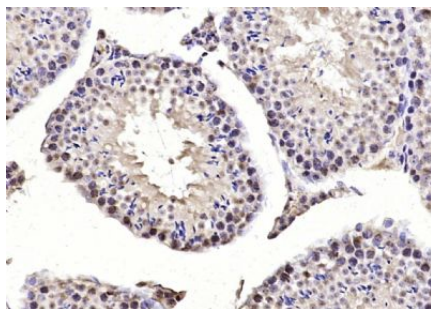
Additional Information

Gene ID	79003
Other Names	Protein MIS12 homolog, MIS12 (HGNC:24967)
Dilution	WB=1:500-2000,IHC-P=1:100-500,IHC-F=1:100-500,IF=1:100-500,ELISA=1:5000-10000
Format	0.01M TBS(pH7.4) with 1% BSA, 0.09% (W/V) sodium azide and 50% Glyce
Storage	Store at -20 °C for one year. Avoid repeated freeze/thaw cycles. When reconstituted in sterile pH 7.4 0.01M PBS or diluent of antibody the antibody is stable for at least two weeks at 2-4 °C.

Protein Information

Name	MIS12 (HGNC:24967)
Function	Part of the MIS12 complex which is required for normal chromosome alignment and segregation and for kinetochore formation during mitosis (PubMed: 12515822 , PubMed: 15502821 , PubMed: 16585270). Essential for proper kinetochore microtubule attachments (PubMed: 23891108).
Cellular Location	Chromosome, centromere, kinetochore Note=Associated with the kinetochore.

Images



Paraformaldehyde-fixed, paraffin embedded (mouse testis tissue); Antigen retrieval by boiling in sodium citrate buffer (pH6.0) for 15min; Block endogenous peroxidase by 3% hydrogen peroxide for 20 minutes; Blocking buffer (normal goat serum) at 37°C for 30min; Antibody incubation with (MIS12) Polyclonal Antibody, Unconjugated (AP58726) at 1:200 overnight at 4°C, followed by operating according to SP Kit(Rabbit) (sp-0023) instructions and DAB staining.

Please note: All products are 'FOR RESEARCH USE ONLY. NOT FOR USE IN DIAGNOSTIC OR THERAPEUTIC PROCEDURES'.