

SPC25 Polyclonal Antibody

Purified Rabbit Polyclonal Antibody (Pab)

Catalog # AP58727

Product Information

Application	WB, IHC-P, IHC-F, IF, E
Primary Accession	Q9HBM1
Reactivity	Rat, Pig, Dog, Bovine
Host	Rabbit
Clonality	Polyclonal
Calculated MW	26153
Physical State	Liquid
Immunogen	KLH conjugated synthetic peptide derived from human SPC25
Epitope Specificity	121-224/224
Isotype	IgG
Purity	affinity purified by Protein A
Buffer	0.01M TBS (pH7.4) with 1% BSA, 0.02% Proclin300 and 50% Glycerol.
SUBCELLULAR LOCATION	Nucleus. Chromosome, centromere, kinetochore. Note=Localizes to kinetochores from late prophase to anaphase. Localizes specifically to the outer plate of the kinetochore.
SIMILARITY	Belongs to the SPC25 family.
SUBUNIT	Component of the NDC80 complex, which consists of NDC80/HEC1, CDCA1, SPBC24 and SPBC25. The NDC80 complex is formed by two subcomplexes composed of NDC80/HEC1-CDCA1 and SPBC24-SPBC25. Each subcomplex is formed by parallel interactions through the coiled-coil domains of individual subunits. Formation of a tetrameric complex is mediated by interactions between the C-terminal regions of both subunits of the NDC80/HEC1-CDCA1 subcomplex and the N-terminal regions of both subunits of the SPBC24-SPBC25 complex. The tetrameric NDC80 complex has an elongated rod-like structure with globular domains at either end.
Important Note	This product as supplied is intended for research use only, not for use in human, therapeutic or diagnostic applications.
Background Descriptions	Acts as a component of the essential kinetochore-associated NDC80 complex, which is required for chromosome segregation and spindle checkpoint activity. Required for kinetochore integrity and the organization of stable microtubule binding sites in the outer plate of the kinetochore.

Additional Information

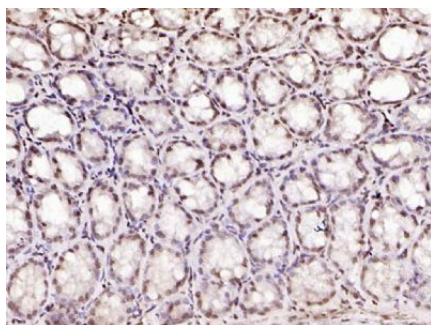
Gene ID	57405
Other Names	Kinetochore protein Spc25, hSpc25, SPC25, SPBC25
Dilution	WB=1:500-2000,IHC-P=1:100-500,IHC-F=1:100-500,IF=1:100-500,ELISA=1:5000-10000

Format	0.01M TBS(pH7.4) with 1% BSA, 0.09% (W/V) sodium azide and 50% Glycerol
Storage	Store at -20 °C for one year. Avoid repeated freeze/thaw cycles. When reconstituted in sterile pH 7.4 0.01M PBS or diluent of antibody the antibody is stable for at least two weeks at 2-4 °C.

Protein Information

Name	SPC25
Synonyms	SPBC25
Function	Acts as a component of the essential kinetochore-associated NDC80 complex, which is required for chromosome segregation and spindle checkpoint activity (PubMed: 14699129 , PubMed: 14738735). Required for kinetochore integrity and the organization of stable microtubule binding sites in the outer plate of the kinetochore (PubMed: 14699129 , PubMed: 14738735). The NDC80 complex synergistically enhances the affinity of the SKA1 complex for microtubules and may allow the NDC80 complex to track depolymerizing microtubules (PubMed: 23085020).
Cellular Location	Nucleus. Chromosome, centromere, kinetochore. Note=Localizes to kinetochores from late prophase to anaphase (PubMed:14738735). Localizes specifically to the outer plate of the kinetochore (PubMed:14699129, PubMed:14738735)

Images



Paraformaldehyde-fixed, paraffin embedded (mouse colon); Antigen retrieval by boiling in sodium citrate buffer (pH6.0) for 15min; Block endogenous peroxidase by 3% hydrogen peroxide for 20 minutes; Blocking buffer (normal goat serum) at 37°C for 30min; Antibody incubation with (SPC25) Polyclonal Antibody, Unconjugated (AP58727) at 1:200 overnight at 4°C, followed by operating according to SP Kit(Rabbit) (sp-0023) instructions and DAB staining.

Please note: All products are 'FOR RESEARCH USE ONLY. NOT FOR USE IN DIAGNOSTIC OR THERAPEUTIC PROCEDURES'.