

# WAPL Rabbit pAb

WAPL Rabbit pAb  
Catalog # AP58736

## Product Information

---

<b>Application</b>	IHC-P, IHC-F, IF
<b>Primary Accession</b>	<a href="#">Q7Z5K2</a>
<b>Reactivity</b>	Human
<b>Predicted</b>	Mouse, Rat, Chicken, Dog, Pig, Horse
<b>Host</b>	Rabbit
<b>Clonality</b>	Polyclonal
<b>Calculated MW</b>	132946
<b>Physical State</b>	Liquid
<b>Immunogen</b>	KLH conjugated synthetic peptide derived from human WAPL
<b>Epitope Specificity</b>	731-830/1190
<b>Isotype</b>	IgG
<b>Purity</b>	affinity purified by Protein A
<b>Buffer</b>	0.01M TBS (pH7.4) with 1% BSA, 0.02% Proclin300 and 50% Glycerol.
<b>SUBCELLULAR LOCATION</b>	Nucleus and Nucleus. Chromosome. Cytoplasm. Associates with chromatin through the cohesin complex during interphase. Released in the cytoplasm from nuclear envelope breakdown until anaphase, it reaccumulates in nucleus at telophase.
<b>SIMILARITY</b>	Contains 1 WAPL domain.
<b>SUBUNIT</b>	Interacts with the cohesin complex throughout the cell cycle; interacts with both chromatin-bound and soluble pools of the complex. Interacts with RAD21; the interaction is direct. Interacts with PDS5A; the interaction is direct, cohesin-dependent and competitive with SORORIN. Interacts (via FGF motifs) with PDS5B; the interaction is direct. Interacts with SMC3. Isoform 2 interacts with Epstein-Barr virus EBNA2.
<b>Important Note</b>	This product as supplied is intended for research use only, not for use in human, therapeutic or diagnostic applications.
<b>Background Descriptions</b>	Regulator of sister chromatid cohesion in mitosis which negatively regulates cohesin association with chromatin. Involved in both sister chromatid cohesion during interphase and sister-chromatid resolution during early stages of mitosis. Couples DNA replication to sister chromatid cohesion. Cohesion ensures that chromosome partitioning is accurate in both meiotic and mitotic cells and plays an important role in DNA repair. Tissue specificity: Isoform 1 is highly expressed in uterine cervix tumor. Isoform 2 is widely expressed with a high level in skeletal muscle and heart.

## Additional Information

---

<b>Gene ID</b>	23063
<b>Other Names</b>	Wings apart-like protein homolog, Friend of EBNA2 protein, WAPL cohesin release factor {ECO:0000312   HGNC:HGNC:23293}, WAPL ( <a href="#">HGNC:23293</a> ), FOE,

KIAA0261, WAPAL

<b>Target/Specificity</b>	Isoform 1 is highly expressed in uterine cervix tumor. Isoform 2 is widely expressed with a high level in skeletal muscle and heart.
<b>Dilution</b>	IHC-P=1:100-500,IHC-F=1:100-500,IF=1:100-500
<b>Storage</b>	Store at -20 °C for one year. Avoid repeated freeze/thaw cycles. When reconstituted in sterile pH 7.4 0.01M PBS or diluent of antibody the antibody is stable for at least two weeks at 2-4 °C.

## Protein Information

---

<b>Name</b>	WAPL ( <a href="#">HGNC:23293</a> )
<b>Synonyms</b>	FOE, KIAA0261, WAPAL
<b>Function</b>	Regulator of sister chromatid cohesion in mitosis which negatively regulates cohesin association with chromatin (PubMed: <a href="#">26299517</a> ). Involved in both sister chromatid cohesion during interphase and sister-chromatid resolution during early stages of mitosis. Couples DNA replication to sister chromatid cohesion. Cohesion ensures that chromosome partitioning is accurate in both meiotic and mitotic cells and plays an important role in DNA repair.
<b>Cellular Location</b>	[Isoform 2]: Nucleus.
<b>Tissue Location</b>	Isoform 1 is highly expressed in uterine cervix tumor. Isoform 2 is widely expressed with a high level in skeletal muscle and heart.

## Background

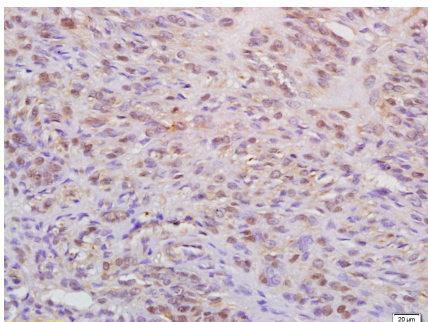
---

Regulator of sister chromatid cohesion in mitosis which negatively regulates cohesin association with chromatin. Involved in both sister chromatid cohesion during interphase and sister-chromatid resolution during early stages of mitosis. Couples DNA replication to sister chromatid cohesion. Cohesion ensures that chromosome partitioning is accurate in both meiotic and mitotic cells and plays an important role in DNA repair.

Tissue specificity: Isoform 1 is highly expressed in uterine cervix tumor. Isoform 2 is widely expressed with a high level in skeletal muscle and heart.

## Images

---



Tissue/cell: human cervical carcinoma; 4%  
Paraformaldehyde-fixed and paraffin-embedded;  
Antigen retrieval: citrate buffer ( 0.01M, pH 6.0 ), Boiling bathing for 15min; Block endogenous peroxidase by 3% Hydrogen peroxide for 30min; Blocking buffer (normal goat serum,C-0005) at 37°C for 20 min;  
Incubation: Anti-WAPL Polyclonal Antibody, Unconjugated(AP58736) 1:200, overnight at 4°C, followed by conjugation to the secondary antibody(SP-0023) and DAB(C-0010) staining