

SPECC1L Rabbit pAb

SPECC1L Rabbit pAb

Catalog # AP58749

Product Information

Application	WB
Primary Accession	Q69YQ0
Reactivity	Human, Mouse
Predicted	Rat, Chicken, Dog, Pig, Horse, Rabbit, Sheep
Host	Rabbit
Clonality	Polyclonal
Calculated MW	124544
Physical State	Liquid
Immunogen	KLH conjugated synthetic peptide derived from human SPECC1L
Epitope Specificity	161-260/1117
Isotype	IgG
Purity	affinity purified by Protein A
Buffer	0.01M TBS (pH7.4) with 1% BSA, 0.02% Proclin300 and 50% Glycerol.
SUBCELLULAR LOCATION	Cytoplasm, cytoskeleton. Cytoplasm, cytoskeleton, spindle. Cell junction, gap junction. Note=Colocalizes with acetylated alpha-tubulin, gamma-tubulin and F-actin. Also observed in a ring around gamma-tubulin containing centrioles possibly in the microtubule organizing center.
SIMILARITY	Belongs to the cytospin-A family. Contains 1 CH (calponin-homology) domain.
SUBUNIT	May interact with both microtubules and actin cytoskeleton.
DISEASE	Defects in SPECC1L are the cause of facial clefting oblique type 1 (OBLFC1) [MIM:600251]. A rare form of facial clefting. A facial cleft is any of the fissures between the embryonic prominences that normally unite to form the face.
Important Note	This product as supplied is intended for research use only, not for use in human, therapeutic or diagnostic applications.
Background Descriptions	This gene encodes a coiled-coil domain containing protein. The encoded protein may play a critical role in actin-cytoskeletal reorganization during facial morphogenesis. Mutations in this gene are a cause of oblique facial clefting-1. Alternatively spliced transcript variants encoding multiple isoforms have been observed for this gene. A read-through transcript composed of SPECC1L (sperm antigen with calponin homology and coiled-coil domains 1-like) and the downstream ADORA2A (adenosine A2a receptor) gene sequence has been identified, but it is thought to be non-coding. [provided by RefSeq, Jun 2013]

Additional Information

Gene ID	23384
Other Names	Cytospin-A, Renal carcinoma antigen NY-REN-22, Sperm antigen with calponin homology and coiled-coil domains 1-like, SPECC1-like protein, SPECC1L, CYTSA, KIAA0376

Dilution	WB=1:500-2000
Storage	Store at -20 °C for one year. Avoid repeated freeze/thaw cycles. When reconstituted in sterile pH 7.4 0.01M PBS or diluent of antibody the antibody is stable for at least two weeks at 2-4 °C.

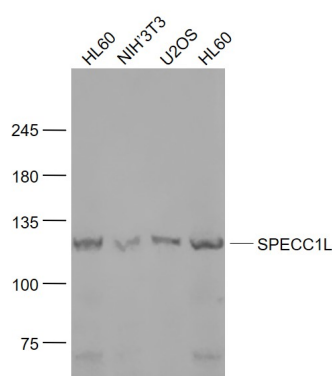
Protein Information

Name	SPECC1L
Synonyms	CYTSA, KIAA0376
Function	Involved in cytokinesis and spindle organization. May play a role in actin cytoskeleton organization and microtubule stabilization and hence required for proper cell adhesion and migration.
Cellular Location	Cytoplasm, cytoskeleton. Cytoplasm, cytoskeleton, spindle. Cell junction, gap junction. Note=Colocalizes with acetylated alpha- tubulin, gamma-tubulin and F-actin. Also observed in a ring around gamma-tubulin containing centrioles possibly in the microtubule organizing center

Background

This gene encodes a coiled-coil domain containing protein. The encoded protein may play a critical role in actin-cytoskeletal reorganization during facial morphogenesis. Mutations in this gene are a cause of oblique facial clefting-1. Alternatively spliced transcript variants encoding multiple isoforms have been observed for this gene. A read-through transcript composed of SPECC1L (sperm antigen with calponin homology and coiled-coil domains 1-like) and the downstream ADORA2A (adenosine A2a receptor) gene sequence has been identified, but it is thought to be non-coding. [provided by RefSeq, Jun 2013]

Images



Sample:
 HL60(Human) Cell Lysate at 30 ug
 NIH/3T3(Mouse) Cell Lysate at 30 ug
 U2OS(Human) Cell Lysate at 30 ug
 HL60 (Human) Cell Lysate at 30 ug
 Primary: Anti- SPECC1L (AP58749) at 1/1000 dilution
 Secondary: IRDye800CW Goat Anti-Rabbit IgG at 1/20000 dilution
 Predicted band size: 125 kD
 Observed band size: 125 kD

Please note: All products are 'FOR RESEARCH USE ONLY. NOT FOR USE IN DIAGNOSTIC OR THERAPEUTIC PROCEDURES'.