

# RINT1 Polyclonal Antibody

Purified Rabbit Polyclonal Antibody (Pab)

Catalog # AP58768

## Product Information

<b>Application</b>	WB, IHC-P, IHC-F, IF, E
<b>Primary Accession</b>	<a href="#">Q6NUQ1</a>
<b>Reactivity</b>	Rat, Pig, Dog
<b>Host</b>	Rabbit
<b>Clonality</b>	Polyclonal
<b>Calculated MW</b>	90632
<b>Physical State</b>	Liquid
<b>Immunogen</b>	KLH conjugated synthetic peptide derived from human RINT1
<b>Epitope Specificity</b>	201-300/792
<b>Purity</b>	affinity purified by Protein A
<b>Buffer</b>	0.01M TBS (pH7.4) with 1% BSA, 0.02% Proclin300 and 50% Glycerol.
<b>SUBCELLULAR LOCATION</b>	Cytoplasm. Endoplasmic reticulum membrane;Peripheral membrane protein.
<b>SIMILARITY</b>	Belongs to the RINT1 family.Contains 1 RINT1/TIP20 domain.
<b>SUBUNIT</b>	Associated with a SNARE complex consisting of STX18,USE1L, BNIP1/SEC20L, and SEC22B. Interacts directly withBNIP1/SEC20L and ZW10. Interacts with RAD50 during late S and G2/Mphases. Interacts with RBL2, preferentially with the active,hypophosphorylated form.
<b>Important Note</b>	This product as supplied is intended for research use only, not for use in human, therapeutic or diagnostic applications.
<b>Background Descriptions</b>	RINT1 is involved in the regulation of membrane traffic between the golgi and the endoplasmic reticulum. It may play a role in cell cycle checkpoint control and is essential for telomere length control.

## Additional Information

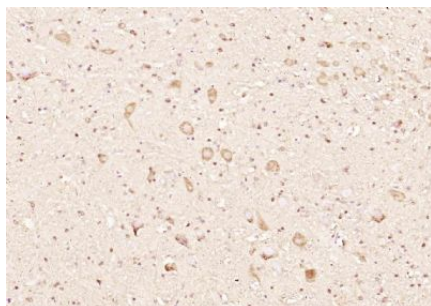
<b>Gene ID</b>	60561
<b>Other Names</b>	RAD50-interacting protein 1, RAD50 interactor 1, HsRINT-1, RINT-1, RINT1
<b>Dilution</b>	WB=1:500-2000,IHC-P=1:100-500,IHC-F=1:100-500,IF=1:100-500,ELISA=1:5000-10000
<b>Format</b>	0.01M TBS(pH7.4) with 1% BSA, 0.09% (W/V) sodium azide and 50% Glyce
<b>Storage</b>	Store at -20 °C for one year. Avoid repeated freeze/thaw cycles. When reconstituted in sterile pH 7.4 0.01M PBS or diluent of antibody the antibody is stable for at least two weeks at 2-4 °C.

## Protein Information

<b>Name</b>	RINT1
<b>Function</b>	Involved in regulation of membrane traffic between the Golgi and the endoplasmic reticulum (ER); the function is proposed to depend on its association in the NRZ complex which is believed to play a role in SNARE assembly at the ER. May play a role in cell cycle checkpoint control (PubMed: <a href="#">11096100</a> ). Essential for telomere length control (PubMed: <a href="#">16600870</a> ).
<b>Cellular Location</b>	Cytoplasm. Endoplasmic reticulum membrane; Peripheral membrane protein

## Images

---



Paraformaldehyde-fixed, paraffin embedded (rat cerebellum); Antigen retrieval by boiling in sodium citrate buffer (pH6.0) for 15min; Block endogenous peroxidase by 3% hydrogen peroxide for 20 minutes; Blocking buffer (normal goat serum) at 37°C for 30min; Antibody incubation with (RCL) Polyclonal Antibody, Unconjugated (AP58768) at 1:200 overnight at 4°C, followed by operating according to SP Kit(Rabbit) (sp-0023) instructions and DAB staining.

Please note: All products are 'FOR RESEARCH USE ONLY. NOT FOR USE IN DIAGNOSTIC OR THERAPEUTIC PROCEDURES'.