

CLK3 Polyclonal Antibody

Purified Rabbit Polyclonal Antibody (Pab)

Catalog # AP58794

Product Information

Application	WB, IHC-P, IHC-F, IF, E
Primary Accession	P49761
Reactivity	Rat, Pig, Dog, Bovine
Host	Rabbit
Clonality	Polyclonal
Calculated MW	58588
Physical State	Liquid
Immunogen	KLH conjugated synthetic peptide derived from human CLK3
Epitope Specificity	321-410/638
Isotype	IgG
Purity	affinity purified by Protein A
Buffer	0.01M TBS (pH7.4) with 1% BSA, 0.02% Proclin300 and 50% Glycerol.
SUBCELLULAR LOCATION	Isoform 1: Nucleus. Cytoplasm (By similarity). Cytoplasmic vesicle, secretory vesicle, acrosome (By similarity). Isoform 2: Nucleus speckle. Note=Co-localizes with serine- and arginine-rich (SR) proteins in the nuclear speckles.
SIMILARITY	Belongs to the protein kinase superfamily. CMGC Ser/Thr protein kinase family. Lammer subfamily. Contains 1 protein kinase domain.
Post-translational modifications	Autophosphorylates on all three types of residues (By similarity).
Important Note	This product as supplied is intended for research use only, not for use in human, therapeutic or diagnostic applications.
Background Descriptions	Phosphorylates serine- and arginine-rich (SR) proteins of the spliceosomal complex. May be a constituent of a network of regulatory mechanisms that enable SR proteins to control RNA splicing. Phosphorylates serines, threonines and tyrosines.

Additional Information

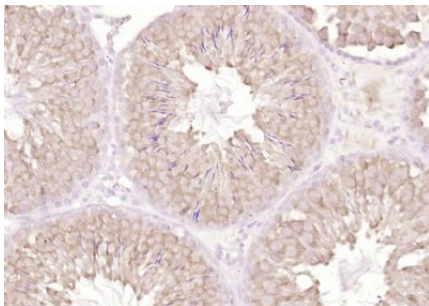
Gene ID	1198
Other Names	Dual specificity protein kinase CLK3, 2.7.12.1, CDC-like kinase 3, CLK3
Target/Specificity	Endothelial cells.
Dilution	WB=1:500-2000,IHC-P=1:100-500,IHC-F=1:100-500,IF=1:100-500,ELISA=1:5000-10000
Format	0.01M TBS(pH7.4) with 1% BSA, 0.09% (W/V) sodium azide and 50% Glyce
Storage	Store at -20 °C for one year. Avoid repeated freeze/thaw cycles. When

reconstituted in sterile pH 7.4 0.01M PBS or diluent of antibody the antibody is stable for at least two weeks at 2-4 °C.

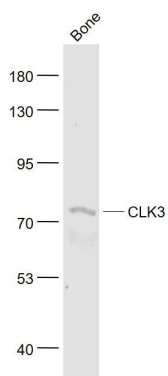
Protein Information

Name	CLK3 (HGNC:2071)
Function	Dual specificity kinase acting on both serine/threonine and tyrosine-containing substrates. Phosphorylates serine- and arginine- rich (SR) proteins of the spliceosomal complex. May be a constituent of a network of regulatory mechanisms that enable SR proteins to control RNA splicing and can cause redistribution of SR proteins from speckles to a diffuse nucleoplasmic distribution. Phosphorylates SRSF1 and SRSF3. Regulates the alternative splicing of tissue factor (F3) pre- mRNA in endothelial cells.
Cellular Location	[Isoform 1]: Nucleus. Cytoplasm. Cytoplasmic vesicle, secretory vesicle, acrosome
Tissue Location	Endothelial cells..

Images



Paraformaldehyde-fixed, paraffin embedded (rat testis); Antigen retrieval by boiling in sodium citrate buffer (pH6.0) for 15min; Block endogenous peroxidase by 3% hydrogen peroxide for 20 minutes; Blocking buffer (normal goat serum) at 37°C for 30min; Antibody incubation with (CLK3) Polyclonal Antibody, Unconjugated (AP58794) at 1:200 overnight at 4°C, followed by operating according to SP Kit(Rabbit) (sp-0023) instructions and DAB staining.



Sample:
Bone (Mouse) Lysate at 40 ug
Primary: Anti- CLK3 (AP58794) at 1/1000 dilution
Secondary: IRDye800CW Goat Anti-Rabbit IgG at 1/20000 dilution
Predicted band size: 73 kD
Observed band size: 73 kD

Please note: All products are 'FOR RESEARCH USE ONLY. NOT FOR USE IN DIAGNOSTIC OR THERAPEUTIC PROCEDURES'.