

ABHD15 Polyclonal Antibody

Purified Rabbit Polyclonal Antibody (Pab)

Catalog # AP58804

Product Information

Application	WB, IHC-P, IHC-F, IF, E
Primary Accession	Q6UXT9
Reactivity	Rat, Pig, Dog, Bovine
Host	Rabbit
Clonality	Polyclonal
Calculated MW	51771
Physical State	Liquid
Immunogen	KLH conjugated synthetic peptide derived from human ABHD15
Epitope Specificity	188-260/468
Purity	affinity purified by Protein A
Buffer	0.01M TBS (pH7.4) with 1% BSA, 0.02% Proclin300 and 50% Glycerol.
SUBCELLULAR LOCATION	Secreted (Potential).
SIMILARITY	Belongs to the AB hydrolase superfamily. AB hydrolase 4 family.
Important Note	This product as supplied is intended for research use only, not for use in human, therapeutic or diagnostic applications.

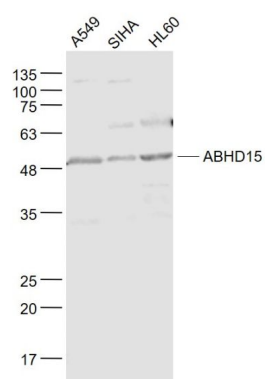
Additional Information

Gene ID	116236
Other Names	Protein ABHD15, 3.1.1.-, Alpha/beta hydrolase domain-containing protein 15, Abhydrolase domain-containing protein 15 {ECO:0000312 HGNC:HGNC:26971}, ABHD15 (HGNC:26971)
Dilution	WB=1:500-2000,IHC-P=1:100-500,IHC-F=1:100-500,IF=1:100-500,ELISA=1:5000-10000
Format	0.01M TBS(pH7.4) with 1% BSA, 0.09% (W/V) sodium azide and 50% Glyce
Storage	Store at -20 °C for one year. Avoid repeated freeze/thaw cycles. When reconstituted in sterile pH 7.4 0.01M PBS or diluent of antibody the antibody is stable for at least two weeks at 2-4 °C.

Protein Information

Name	ABHD15 (HGNC:26971)
Function	May regulate adipocyte lipolysis and liver lipid accumulation.
Cellular Location	Secreted.

Images



Sample:

A549(Human) Cell Lysate at 30 ug

SiHa(Human) Cell Lysate at 30 ug

HL60(Human) Cell Lysate at 30 ug

Primary: Anti- ABHD15 (AP58804) at 1/1000 dilution

Secondary: IRDye800CW Goat Anti-Rabbit IgG at
1/20000 dilution

Predicted band size: 49 kD

Observed band size: 49 kD

Please note: All products are 'FOR RESEARCH USE ONLY. NOT FOR USE IN DIAGNOSTIC OR THERAPEUTIC PROCEDURES'.