

CCBE1 Polyclonal Antibody

Purified Rabbit Polyclonal Antibody (Pab)

Catalog # AP58823

Product Information

Application	WB, IHC-P, IHC-F, IF, E
Primary Accession	Q6UXH8
Reactivity	Rat, Pig, Dog
Host	Rabbit
Clonality	Polyclonal
Calculated MW	44103
Physical State	Liquid
Immunogen	KLH conjugated synthetic peptide derived from human CCBE1
Epitope Specificity	201-300/406
Isotype	IgG
Purity	affinity purified by Protein A
Buffer	0.01M TBS (pH7.4) with 1% BSA, 0.02% Proclin300 and 50% Glycerol.
SUBCELLULAR LOCATION	Secreted (Potential).
SIMILARITY	Belongs to the CCBE1 family.
DISEASE	Defects in CCBE1 are the cause of Hennekamlymphangiectasia-lymphedema syndrome (HLLS) [MIM:235510]. HLLS is a generalized lymph-vessels dysplasia characterized by intestinallymphangiectasia with severe lymphedema of the limbs, genitalia and face. In addition, affected individuals have unusual facies and severe mental retardation.
Important Note	This product as supplied is intended for research use only, not for use in human, therapeutic or diagnostic applications.
Background Descriptions	This gene is thought to function in extracellular matrix remodeling and migration. It is predominantly expressed in the ovary, but down regulated in ovarian cancer cell lines and primary carcinomas, suggesting its role as a tumour suppressor. Mutations in this gene have been associated with Hennekamlymphangiectasia-lymphedema syndrome, a generalized lymphatic dysplasia in humans. [provided by RefSeq, Mar 2010].

Additional Information

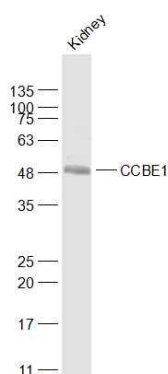
Gene ID	147372
Other Names	Collagen and calcium-binding EGF domain-containing protein 1, Full of fluid protein homolog, CCBE1, KIAA1983
Dilution	WB=1:500-2000, IHC-P=1:100-500, IHC-F=1:100-500, IF=1:100-500, ELISA=1:5000-10000
Format	0.01M TBS (pH7.4) with 1% BSA, 0.09% (W/V) sodium azide and 50% Glyce
Storage	Store at -20 °C for one year. Avoid repeated freeze/thaw cycles. When

reconstituted in sterile pH 7.4 0.01M PBS or diluent of antibody the antibody is stable for at least two weeks at 2-4 °C.

Protein Information

Name	CCBE1
Synonyms	KIAA1983
Function	Required for lymphangioblast budding and angiogenic sprouting from venous endothelium during embryogenesis.
Cellular Location	Secreted
Tissue Location	Detected in fibroblasts and urine (at protein level) (PubMed:25326458, PubMed:36213313, PubMed:37453717). Not expressed in blood or lymphatic endothelial cells

Images



Sample:
Kidney (Mouse) Lysate at 40 ug
Primary: Anti-CCBE1 (AP58823) at 1/1000 dilution
Secondary: IRDye800CW Goat Anti-Rabbit IgG at 1/20000 dilution
Predicted band size: 41 kD
Observed band size: 49 kD

Please note: All products are 'FOR RESEARCH USE ONLY. NOT FOR USE IN DIAGNOSTIC OR THERAPEUTIC PROCEDURES'.