

CCDC7 Polyclonal Antibody

Purified Rabbit Polyclonal Antibody (Pab)

Catalog # AP58826

Product Information

Application	WB, IHC-P, IHC-F, IF, E
Primary Accession	Q96M83
Reactivity	Rat, Pig, Dog, Bovine
Host	Rabbit
Clonality	Polyclonal
Calculated MW	157448
Physical State	Liquid
Immunogen	KLH conjugated synthetic peptide derived from human CCDC7
Epitope Specificity	155-250/486
Isotype	IgG
Purity	affinity purified by Protein A
Buffer	0.01M TBS (pH7.4) with 1% BSA, 0.02% Proclin300 and 50% Glycerol.
Important Note	This product as supplied is intended for research use only, not for use in human, therapeutic or diagnostic applications.
Background Descriptions	<p>The coiled-coil domain is a structural motif found in proteins that are involved in a diverse array of biological functions such as the regulation of gene expression, cell division, membrane fusion and drug extrusion and delivery. Some proteins that contain coil-coiled domains include c-jun, c-fos and tropomyosin. Coiled-coil domains consist of two or more α helices packed together via interlacing side chains. CCDC7 (Coiled-coil domain-containing protein 7) is a 486 amino acid protein that contains a coiled-coil domain and is encoded by a gene that maps to human chromosome 10, which houses over 1,200 genes and comprises nearly 4.5% of the human genome. Defects in some genes that map to chromosome 10 are associated with Charcot-Marie Tooth disease, Jackson-Weiss syndrome, Usher syndrome, nonsyndromic deafness, Wolman syndrome, Cowden syndrome, multiple endocrine neoplasia type 2 and porphyria. There are two isoforms of CCDC7 that are produced as a result of alternative splicing events.</p>

Additional Information

Gene ID	79741
Other Names	Coiled-coil domain-containing protein 7, Protein BIOT2, CCDC7, BIOT2, C10orf68
Dilution	WB=1:500-2000,IHC-P=1:100-500,IHC-F=1:100-500,IF=1:100-500,ELISA=1:5000-10000
Format	0.01M TBS(pH7.4) with 1% BSA, 0.09% (W/V) sodium azide and 50% Glyce

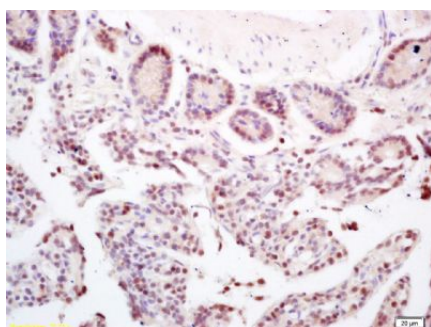
Storage

Store at -20 °C for one year. Avoid repeated freeze/thaw cycles. When reconstituted in sterile pH 7.4 0.01M PBS or diluent of antibody the antibody is stable for at least two weeks at 2-4 °C.

Protein Information

Name	CCDC7
Synonyms	BIOT2, C10orf68
Function	May play a role in tumorigenesis.
Tissue Location	Expressed in epithelium of normal cervix and cervical cancer. Overexpressed in early and interim cervical cancer

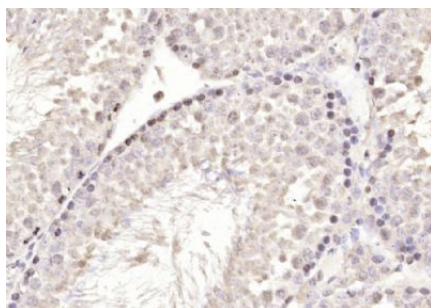
Images



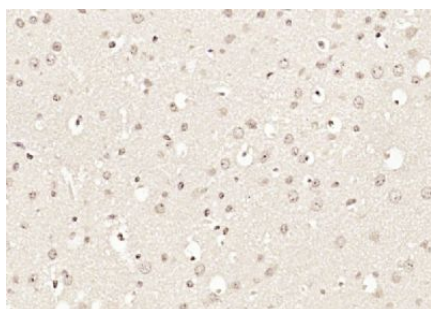
Tissue/cell: Mouse intestine; 4% Paraformaldehyde-fixed and paraffin-embedded;

Antigen retrieval: citrate buffer (0.01M, pH 6.0), Boiling bathing for 15min; Block endogenous peroxidase by 3% Hydrogen peroxide for 30min; Blocking buffer (normal goat serum,C-0005) at 37°C for 20 min;

Incubation: Anti-CCDC7 Polyclonal Antibody, Unconjugated(AP58826) 1:200, overnight at 4°C, followed by conjugation to the secondary antibody(SP-0023) and DAB(C-0010) staining



Paraformaldehyde-fixed, paraffin embedded (mouse testis); Antigen retrieval by boiling in sodium citrate buffer (pH6.0) for 15min; Block endogenous peroxidase by 3% hydrogen peroxide for 20 minutes; Blocking buffer (normal goat serum) at 37°C for 30min; Antibody incubation with (CCDC7) Polyclonal Antibody, Unconjugated (AP58826) at 1:200 overnight at 4°C, followed by operating according to SP Kit(Rabbit) (sp-0023) instructionsand DAB staining.



Paraformaldehyde-fixed, paraffin embedded (mouse brain); Antigen retrieval by boiling in sodium citrate buffer (pH6.0) for 15min; Block endogenous peroxidase by 3% hydrogen peroxide for 20 minutes; Blocking buffer (normal goat serum) at 37°C for 30min; Antibody incubation with (CCDC7) Polyclonal Antibody, Unconjugated (AP58826) at 1:200 overnight at 4°C, followed by operating according to SP Kit(Rabbit) (sp-0023) instructionsand DAB staining.

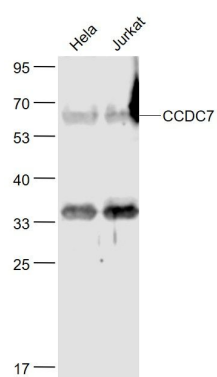
Sample:

Hela(Human) Cell Lysate at 30 ug

Jurkat(Human) Cell Lysate at 30 ug

Primary: Anti- CCDC7 (AP58826) at 1/1000 dilution

Secondary: IRDye800CW Goat Anti-Rabbit IgG at 1/20000 dilution



Predicted band size: 56 kD
Observed band size: 56 kD

Please note: All products are 'FOR RESEARCH USE ONLY. NOT FOR USE IN DIAGNOSTIC OR THERAPEUTIC PROCEDURES'.