

CAMLG Antibody (Center)

Affinity Purified Rabbit Polyclonal Antibody (Pab)

Catalog # AP5885c

Product Information

Application	WB, FC, E
Primary Accession	P49069
Other Accession	NP_001736.1
Reactivity	Human
Host	Rabbit
Clonality	Polyclonal
Isotype	Rabbit IgG
Clone Names	RB22722
Calculated MW	32953
Antigen Region	111-138

Additional Information

Gene ID	819
Other Names	Calcium signal-modulating cyclophilin ligand, CAML, CAMLG, CAML
Target/Specificity	This CAMLG antibody is generated from rabbits immunized with a KLH conjugated synthetic peptide between 111-138 amino acids from the Central region of human CAMLG.
Dilution	WB~~1:1000 FC~~1:10~50 E~~Use at an assay dependent concentration.
Format	Purified polyclonal antibody supplied in PBS with 0.09% (W/V) sodium azide. This antibody is purified through a protein A column, followed by peptide affinity purification.
Storage	Maintain refrigerated at 2-8°C for up to 2 weeks. For long term storage store at -20°C in small aliquots to prevent freeze-thaw cycles.
Precautions	CAMLG Antibody (Center) is for research use only and not for use in diagnostic or therapeutic procedures.

Protein Information

Name	CAMLG (HGNC:1471)
Function	Required for the post-translational delivery of tail-anchored (TA) proteins to the endoplasmic reticulum (PubMed: 23041287 , PubMed: 24392163 , PubMed: 27226539). Together with GET1/WRB, acts as a membrane receptor for soluble GET3/TRC40, which recognizes and selectively binds the

transmembrane domain of TA proteins in the cytosol (PubMed:[23041287](#), PubMed:[24392163](#), PubMed:[27226539](#)). Required for the stability of GET1 (PubMed:[32187542](#)). Stimulates calcium signaling in T cells through its involvement in elevation of intracellular calcium (PubMed:[7522304](#)). Essential for the survival of peripheral follicular B cells (By similarity).

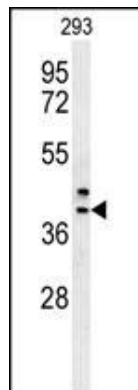
Cellular Location

Endoplasmic reticulum membrane; Multi-pass membrane protein

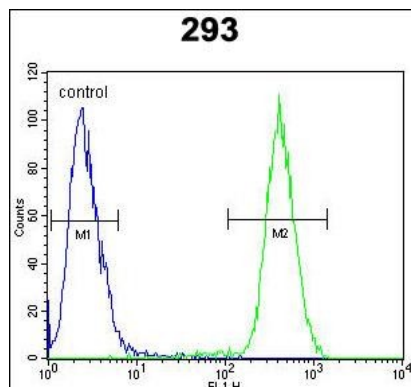
Tissue Location

Ubiquitous. Highest levels in brain, testis and ovary

Images



CAMLG Antibody (Center) (Cat. #AP5885c) western blot analysis in 293 cell line lysates (35ug/lane). This demonstrates the CAMLG antibody detected the CAMLG protein (arrow).



CAMLG Antibody (Center) (Cat. #AP5885c) flow cytometric analysis of 293 cells (right histogram) compared to a negative control cell (left histogram). FITC-conjugated goat-anti-rabbit secondary antibodies were used for the analysis.

Please note: All products are 'FOR RESEARCH USE ONLY. NOT FOR USE IN DIAGNOSTIC OR THERAPEUTIC PROCEDURES'.