

# CCDC68 Polyclonal Antibody

Purified Rabbit Polyclonal Antibody (Pab)

Catalog # AP58864

## Product Information

---

<b>Application</b>	WB, IHC-P, IHC-F, IF, E
<b>Primary Accession</b>	<a href="#">Q9H2F9</a>
<b>Reactivity</b>	Rat, Dog
<b>Host</b>	Rabbit
<b>Clonality</b>	Polyclonal
<b>Calculated MW</b>	38869
<b>Physical State</b>	Liquid
<b>Immunogen</b>	KLH conjugated synthetic peptide derived from Human CCDC68/se57-1
<b>Epitope Specificity</b>	255-335/335
<b>Isotype</b>	IgG
<b>Purity</b>	affinity purified by Protein A
<b>Buffer</b>	0.01M TBS (pH7.4) with 1% BSA, 0.02% Proclin300 and 50% Glycerol.
<b>Important Note</b>	This product as supplied is intended for research use only, not for use in human, therapeutic or diagnostic applications.
<b>Background Descriptions</b>	CCDC68, also known as CTCL tumor antigen se57-1, is a 335 amino acid protein expressed in cutaneous T-cell lymphoma (CTCL), bone marrow, colon, small intestine, spleen, testis and trachea tissues. CTCL is a cancer of the immune system associated with mutation of the T cells. Malignant T cells form lesions on the surface of the skin. se57-1 contains 1 coiled coil domain and is encoded by the CCDC68 gene mapping to human chromosome 18. Chromosome 18 houses over 300 protein-coding genes and contains nearly 76 million bases. There are a variety of diseases associated with defects in chromosome 18-localized genes, some of which include Trisomy 18 (also known as Edwards syndrome), Niemann-Pick disease, hereditary hemorrhagic telangiectasia, erythropoietic protoporphyria and follicular lymphomas.

## Additional Information

---

<b>Gene ID</b>	80323
<b>Other Names</b>	Coiled-coil domain-containing protein 68, Cutaneous T-cell lymphoma-associated antigen se57-1, CTCL-associated antigen se57-1, CCDC68
<b>Target/Specificity</b>	Expressed in bone marrow, colon, small intestine, spleen, testis, trachea and cutaneous T-cell lymphoma (CTCL).
<b>Dilution</b>	WB=1:500-2000,IHC-P=1:100-500,IHC-F=1:100-500,IF=1:100-500,ELISA=1:5000-10000
<b>Format</b>	0.01M TBS(pH7.4) with 1% BSA, 0.09% (W/V) sodium azide and 50% Glyce

**Storage** Store at -20 °C for one year. Avoid repeated freeze/thaw cycles. When reconstituted in sterile pH 7.4 0.01M PBS or diluent of antibody the antibody is stable for at least two weeks at 2-4 °C.

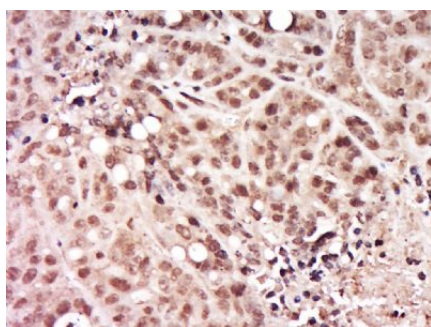
## Protein Information

---

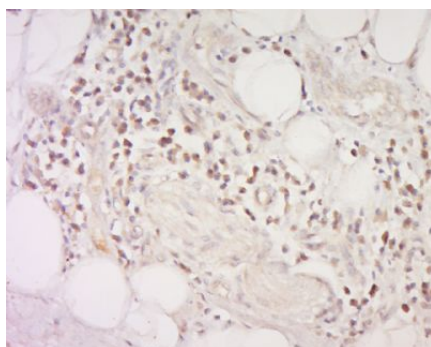
<b>Name</b>	CCDC68
<b>Function</b>	Centriolar protein required for centriole subdistal appendage assembly and microtubule anchoring in interphase cells (PubMed: <a href="#">28422092</a> ). Together with CCDC120, cooperate with subdistal appendage components ODF2, NIN and CEP170 for hierarchical subdistal appendage assembly (PubMed: <a href="#">28422092</a> ).
<b>Cellular Location</b>	Cytoplasm, cytoskeleton, microtubule organizing center, centrosome, centriole Note=Localizes to the subdistal appendages of centrioles (PubMed:28422092).
<b>Tissue Location</b>	Expressed in bone marrow, colon, small intestine, spleen, testis, trachea and cutaneous T-cell lymphoma (CTCL)

## Images

---

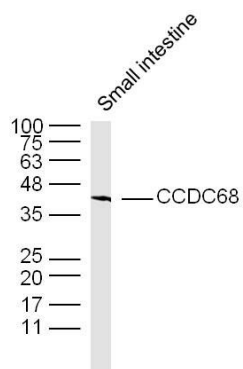


Tissue/cell: human skin tissue; 4%  
Paraformaldehyde-fixed and paraffin-embedded;  
Antigen retrieval: citrate buffer ( 0.01M, pH 6.0 ), Boiling bathing for 15min; Block endogenous peroxidase by 3% Hydrogen peroxide for 30min; Blocking buffer (normal goat serum,C-0005) at 37°C for 20 min;  
Incubation: Anti-CCDC68 Polyclonal Antibody, Unconjugated(AP58864) 1:500, overnight at 4°C, followed by conjugation to the secondary antibody(SP-0023) and DAB(C-0010) staining



Tissue/cell: human colon carcinoma; 4%  
Paraformaldehyde-fixed and paraffin-embedded;  
Antigen retrieval: citrate buffer ( 0.01M, pH 6.0 ), Boiling bathing for 15min; Block endogenous peroxidase by 3% Hydrogen peroxide for 30min; Blocking buffer (normal goat serum,C-0005) at 37°C for 20 min;  
Incubation: Anti-CCDC68 Polyclonal Antibody, Unconjugated(AP58864) 1:500, overnight at 4°C, followed by conjugation to the secondary antibody(SP-0023) and DAB(C-0010) staining

Sample: Small intestine (Mouse) Lysate at 40 ug  
Primary: Anti-CCDC68 (AP58864) at 1/300 dilution  
Secondary: IRDye800CW Goat Anti-Rabbit IgG at 1/20000 dilution  
Predicted band size: 39 kD  
Observed band size: 39 kD



Please note: All products are 'FOR RESEARCH USE ONLY. NOT FOR USE IN DIAGNOSTIC OR THERAPEUTIC PROCEDURES'.