

CCDC34 Polyclonal Antibody

Purified Rabbit Polyclonal Antibody (Pab)

Catalog # AP58871

Product Information

Application	IHC-P, IHC-F, IF, E
Primary Accession	Q96HJ3
Reactivity	Rat, Pig
Host	Rabbit
Clonality	Polyclonal
Calculated MW	43225
Physical State	Liquid
Immunogen	KLH conjugated synthetic peptide derived from human CCDC34
Epitope Specificity	177-280/373
Isotype	IgG
Purity	affinity purified by Protein A
Buffer	0.01M TBS (pH7.4) with 1% BSA, 0.02% Proclin300 and 50% Glycerol.
DISEASE	Note=A chromosomal aberration involving CCDC34 is found in a patient with hamartoma of the retinal pigment epithelium and retina. Translocation t(11;18) (p13;p11.2).
Important Note	This product as supplied is intended for research use only, not for use in human, therapeutic or diagnostic applications.
Background Descriptions	The coiled-coil domain is a structural motif found in proteins that are involved in a diverse array of biological functions such as the regulation of gene expression, cell division, membrane fusion and drug extrusion and delivery. CCDC34 (coiled-coil domain containing 34), also known as Renal carcinoma antigen NY-REN-41, is a 373 amino acid protein that is expressed in testis, breast, lung, placenta, liver and small intestine. A translocation between the short arms of chromosomes 11 and 18 affecting the CCDC34 gene has been identified in a patient with hamartoma of the retinal pigment epithelium. There are two isoforms of CCDC34 that are produced as a result of alternative splicing events.

Additional Information

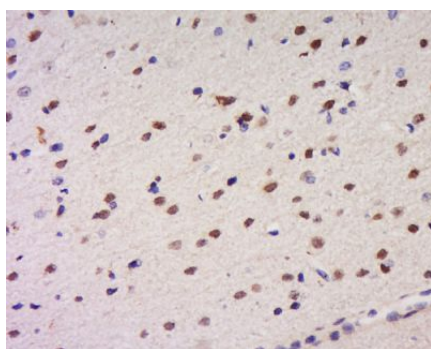
Gene ID	91057
Other Names	Coiled-coil domain-containing protein 34, Renal carcinoma antigen NY-REN-41, CCDC34, RAMA3
Dilution	IHC-P=1:100-500,IHC-F=1:100-500,IF=1:100-500,ELISA=1:5000-10000
Format	0.01M TBS(pH7.4) with 1% BSA, 0.09% (W/V) sodium azide and 50% Glyce
Storage	Store at -20 °C for one year. Avoid repeated freeze/thaw cycles. When reconstituted in sterile pH 7.4 0.01M PBS or diluent of antibody the antibody

is stable for at least two weeks at 2-4 °C.

Protein Information

Name	CCDC34
Synonyms	RAMA3
Function	Involved in spermatogenesis. Has a probable role in anterograde intraflagellar transport which is essential for the formation of sperm flagella.
Cellular Location	Cell projection, cilium, flagellum. Note=Mainly located in the mid-piece of sperm flagella.
Tissue Location	Expressed in sperm..

Images



Tissue/cell: Rat brain tissue; 4% Paraformaldehyde-fixed and paraffin-embedded;

Antigen retrieval: citrate buffer (0.01M, pH 6.0), Boiling bathing for 15min; Block endogenous peroxidase by 3% Hydrogen peroxide for 30min; Blocking buffer (normal goat serum,C-0005) at 37°C for 20 min;

Incubation: Anti-CCDC34 Polyclonal Antibody, Unconjugated(AP58871) 1:500, overnight at 4°C, followed by conjugation to the secondary antibody(SP-0023) and DAB(C-0010) staining

Please note: All products are 'FOR RESEARCH USE ONLY. NOT FOR USE IN DIAGNOSTIC OR THERAPEUTIC PROCEDURES'.