

COMMD8 Rabbit pAb

COMMD8 Rabbit pAb

Catalog # AP58906

Product Information

Application	WB
Primary Accession	Q9NX08
Reactivity	Mouse
Predicted	Human, Rat, Dog, Pig, Horse, Rabbit, Sheep
Host	Rabbit
Clonality	Polyclonal
Calculated MW	21090
Physical State	Liquid
Immunogen	KLH conjugated synthetic peptide derived from human COMMD8
Epitope Specificity	101-183/183
Isotype	IgG
Purity	affinity purified by Protein A
Buffer	0.01M TBS (pH7.4) with 1% BSA, 0.02% Proclin300 and 50% Glycerol.
SIMILARITY	Contains 1 COMM domain.
SUBUNIT	Interacts (via COMM domain) with COMMD1 (via COMM domain).
Important Note	This product as supplied is intended for research use only, not for use in human, therapeutic or diagnostic applications.
Background Descriptions	Widely expressed with highest expression in thyroid.

Additional Information

Gene ID	54951
Other Names	COMM domain-containing protein 8, COMMD8
Target/Specificity	Widely expressed with highest expression in thyroid.
Dilution	WB=1:500-2000
Storage	Store at -20 °C for one year. Avoid repeated freeze/thaw cycles. When reconstituted in sterile pH 7.4 0.01M PBS or diluent of antibody the antibody is stable for at least two weeks at 2-4 °C.

Protein Information

Name	COMMD8
Function	Scaffold protein in the commander complex that is essential for endosomal recycling of transmembrane cargos; the commander complex is composed of

the CCC subcomplex and the retriever subcomplex (PubMed:[37172566](#), PubMed:[38459129](#)). May modulate activity of cullin- RING E3 ubiquitin ligase (CRL) complexes (PubMed:[21778237](#)). May down- regulate activation of NF-kappa-B (PubMed:[15799966](#)).

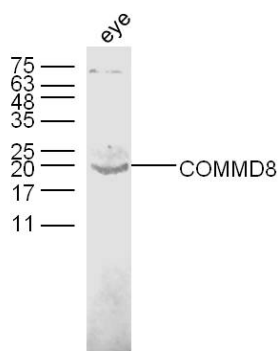
Cellular Location Cytoplasm. Nucleus

Tissue Location Widely expressed with highest expression in thyroid.

Background

Widely expressed with highest expression in thyroid.

Images



Sample: Eye (Mouse) Lysate at 40 ug
Primary: Anti-COMMD8 (AP58906) at 1/300 dilution
Secondary: IRDye800CW Goat Anti-Rabbit IgG at 1/20000 dilution
Predicted band size: 21 kD
Observed band size: 20 kD

Please note: All products are 'FOR RESEARCH USE ONLY. NOT FOR USE IN DIAGNOSTIC OR THERAPEUTIC PROCEDURES'.