

FAM120B Polyclonal Antibody

Purified Rabbit Polyclonal Antibody (Pab)

Catalog # AP58912

Product Information

Application	WB, IHC-P, IHC-F, IF, E
Primary Accession	Q96EK7
Reactivity	Rat, Bovine
Host	Rabbit
Clonality	Polyclonal
Calculated MW	103783
Physical State	Liquid
Immunogen	KLH conjugated synthetic peptide derived from human FAM120B
Epitope Specificity	65-170/910
Isotype	IgG
Purity	affinity purified by Protein A
Buffer	0.01M TBS (pH7.4) with 1% BSA, 0.02% Proclin300 and 50% Glycerol.
SUBCELLULAR LOCATION	Nucleus (By similarity).
SIMILARITY	Belongs to the constitutive coactivator of PPAR-gamma family.
SUBUNIT	Interacts with ESR1 and RXRA. Interacts with PPARG; in a ligand-independent manner (By similarity).
Important Note	This product as supplied is intended for research use only, not for use in human, therapeutic or diagnostic applications.
Background Descriptions	Functions as a transactivator of PPARG and ESR1. Functions in adipogenesis through PPARG activation.

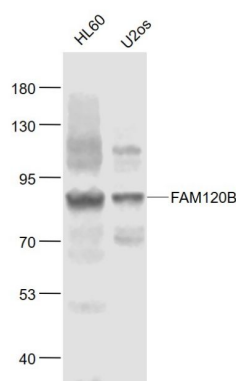
Additional Information

Gene ID	84498
Other Names	Constitutive coactivator of peroxisome proliferator-activated receptor gamma, Constitutive coactivator of PPAR-gamma, Constitutive coactivator of PPARG, PPARG constitutive coactivator 1, PGCC1, Protein FAM120B, FAM120B, CCPG, KIAA1838
Target/Specificity	Widely expressed.
Dilution	WB=1:500-2000,IHC-P=1:100-500,IHC-F=1:100-500,IF=1:100-500,ELISA=1:5000-10000
Format	0.01M TBS(pH7.4) with 1% BSA, 0.09% (W/V) sodium azide and 50% Glyce
Storage	Store at -20 °C for one year. Avoid repeated freeze/thaw cycles. When reconstituted in sterile pH 7.4 0.01M PBS or diluent of antibody the antibody is stable for at least two weeks at 2-4 °C.

Protein Information

Name	FAM120B
Synonyms	CCPG, KIAA1838
Function	Functions as a transactivator of PPARG and ESR1. Functions in adipogenesis through PPARG activation (By similarity).
Cellular Location	Nucleus.
Tissue Location	Widely expressed..

Images



Sample:

HL60(Human) Cell Lysate at 30 ug

U2os(Human) Cell Lysate at 30 ug

Primary: Anti- FAM120B (AP58912) at 1/1000 dilution

Secondary: IRDye800CW Goat Anti-Rabbit IgG at 1/20000 dilution

Predicted band size: 80/93 kD

Observed band size: 80 kD

Please note: All products are 'FOR RESEARCH USE ONLY. NOT FOR USE IN DIAGNOSTIC OR THERAPEUTIC PROCEDURES'.