

# FAM102B Polyclonal Antibody

Purified Rabbit Polyclonal Antibody (Pab)

Catalog # AP58930

## Product Information

---

<b>Application</b>	IHC-P, IHC-F, IF, E
<b>Primary Accession</b>	<a href="#">Q5T8I3</a>
<b>Reactivity</b>	Rat, Pig, Dog, Bovine
<b>Host</b>	Rabbit
<b>Clonality</b>	Polyclonal
<b>Calculated MW</b>	39308
<b>Physical State</b>	Liquid
<b>Immunogen</b>	KLH conjugated synthetic peptide derived from human FAM102B
<b>Epitope Specificity</b>	53-150/360
<b>Isotype</b>	IgG
<b>Purity</b>	affinity purified by Protein A
<b>Buffer</b>	0.01M TBS (pH7.4) with 1% BSA, 0.02% Proclin300 and 50% Glycerol.
<b>SIMILARITY</b>	Belongs to the FAM102 family.
<b>Important Note</b>	This product as supplied is intended for research use only, not for use in human, therapeutic or diagnostic applications.
<b>Background Descriptions</b>	Chromosome 1 is the largest human chromosome spanning about 260 million base pairs and making up 8% of the human genome. There are about 3,000 genes on chromosome 1, and considering the great number of genes there are also a large number of diseases associated with chromosome 1. Notably, the rare aging disease Hutchinson-Gilford progeria is associated with the LMNA gene which encodes lamin A. When defective, the LMNA gene product can build up in the nucleus and cause characteristic nuclear blebs. The mechanism of rapidly enhanced aging is unclear and is a topic of continuing exploration. The MUTYH gene is located on chromosome 1 and is partially responsible for familial adenomatous polyposis. Stickler syndrome, Parkinsons, Gaucher disease and Usher syndrome are also associated with chromosome 1. A breakpoint has been identified in 1q which disrupts the DISC1 gene and is linked to schizophrenia. Aberrations in chromosome 1 are found in a variety of cancers including head and neck cancer, malignant melanoma and multiple myeloma. The FAM102B gene product has been provisionally designated FAM102B pending further characterization.

## Additional Information

---

<b>Gene ID</b>	284611
<b>Other Names</b>	Protein FAM102B, FAM102B
<b>Dilution</b>	IHC-P=1:100-500,IHC-F=1:100-500,IF=1:100-500,ELISA=1:5000-10000
<b>Format</b>	0.01M TBS(pH7.4) with 1% BSA, 0.09% (W/V) sodium azide and 50% Glyce

## Storage

Store at -20 °C for one year. Avoid repeated freeze/thaw cycles. When reconstituted in sterile pH 7.4 0.01M PBS or diluent of antibody the antibody is stable for at least two weeks at 2-4 °C.

## Protein Information

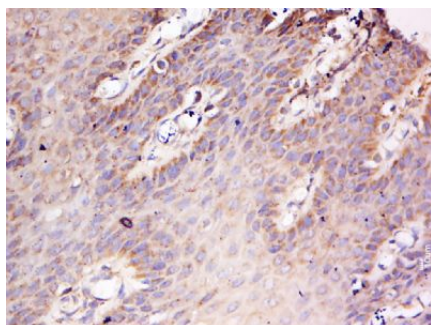
---

**Name** EEIG2 ( [HGNC:27637](#))

**Synonyms** FAM102B

## Images

---



Tissue/cell: human cervical cancer; 4%  
Paraformaldehyde-fixed and paraffin-embedded;  
Antigen retrieval: citrate buffer ( 0.01M, pH 6.0 ), Boiling  
bathing for 15min; Block endogenous peroxidase by 3%  
Hydrogen peroxide for 30min; Blocking buffer (normal  
goat serum,C-0005) at 37°C for 20 min;  
Incubation: Anti-FAM102B Polyclonal Antibody,  
Unconjugated(AP58930) 1:500, overnight at 4°C, followed  
by conjugation to the secondary antibody(SP-0023) and  
DAB(C-0010) staining

Please note: All products are 'FOR RESEARCH USE ONLY. NOT FOR USE IN DIAGNOSTIC OR THERAPEUTIC PROCEDURES'.