

C13orf18 Antibody (Center)

Affinity Purified Rabbit Polyclonal Antibody (Pab)

Catalog # AP5893c

Product Information

Application	FC, WB, E
Primary Accession	Q9H714
Other Accession	NP_079389.2
Reactivity	Human
Host	Rabbit
Clonality	Polyclonal
Isotype	Rabbit IgG
Clone Names	RB23357
Calculated MW	73457
Antigen Region	379-405

Additional Information

Gene ID	80183
Other Names	Uncharacterized protein KIAA0226-like, KIAA0226L, C13orf18
Target/Specificity	This C13orf18 antibody is generated from rabbits immunized with a KLH conjugated synthetic peptide between 379-405 amino acids from the Central region of human C13orf18.
Dilution	FC~~1:10~50 WB~~1:1000 E~~Use at an assay dependent concentration.
Format	Purified polyclonal antibody supplied in PBS with 0.09% (W/V) sodium azide. This antibody is purified through a protein A column, followed by peptide affinity purification.
Storage	Maintain refrigerated at 2-8°C for up to 2 weeks. For long term storage store at -20°C in small aliquots to prevent freeze-thaw cycles.
Precautions	C13orf18 Antibody (Center) is for research use only and not for use in diagnostic or therapeutic procedures.

Protein Information

Name	RUBCNL (HGNC:20420)
Function	Regulator of autophagy that promotes autophagosome maturation by facilitating the biogenesis of phosphatidylinositol 3-phosphate (PtdIns(3)P) in late steps of autophagy (PubMed: 28306502 , PubMed: 30704899). Acts by antagonizing RUBCN, thereby stimulating phosphatidylinositol 3-kinase

activity of the PI3K/PI3KC3 complex (PubMed:[28306502](#)). Following anchorage to the autophagosomal SNARE STX17, promotes the recruitment of PI3K/PI3KC3 and HOPS complexes to the autophagosome to regulate the fusion specificity of autophagosomes with late endosomes/lysosomes (PubMed:[28306502](#)). Binds phosphoinositides phosphatidylinositol 3-phosphate (PtdIns(3)P), 4- phosphate (PtdIns(4)P) and 5-phosphate (PtdIns(5)P) (PubMed:[28306502](#)). In addition to its role in autophagy, acts as a regulator of lipid and glycogen homeostasis (By similarity). May act as a tumor suppressor (Probable).

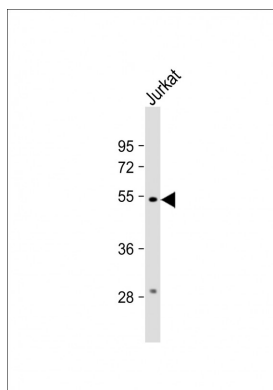
Cellular Location

Cytoplasmic vesicle, autophagosome membrane; Peripheral membrane protein. Note=Associates with late autophagic structure (PubMed:28306502). Recruitment to autophagosome membrane is promoted by autophagic stimuli (PubMed:28306502)

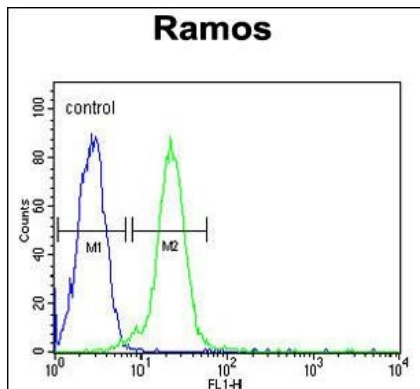
Tissue Location

Expressed weakly in cervical carcinoma cell lines.

Images



Anti-C13orf18 Antibody (Center) at 1:1000 dilution + Jurkat whole cell lysate Lysates/proteins at 20 µg per lane. Secondary Goat Anti-Rabbit IgG, (H+L), Peroxidase conjugated at 1/10000 dilution. Predicted band size : 73 kDa Blocking/Dilution buffer: 5% NFDM/TBST.



C13orf18 Antibody (Center) (Cat. #AP5893c) flow cytometric analysis of Ramos cells (right histogram) compared to a negative control cell (left histogram). FITC-conjugated goat-anti-rabbit secondary antibodies were used for the analysis.

Please note: All products are 'FOR RESEARCH USE ONLY. NOT FOR USE IN DIAGNOSTIC OR THERAPEUTIC PROCEDURES'.