

# HDHD3 Polyclonal Antibody

Purified Rabbit Polyclonal Antibody (Pab)

Catalog # AP58963

## Product Information

---

<b>Application</b>	WB, IHC-P, IHC-F, IF, E
<b>Primary Accession</b>	<a href="#">Q9BSH5</a>
<b>Reactivity</b>	Rat, Dog, Bovine
<b>Host</b>	Rabbit
<b>Clonality</b>	Polyclonal
<b>Calculated MW</b>	28000
<b>Physical State</b>	Liquid
<b>Immunogen</b>	KLH conjugated synthetic peptide derived from human HDHD3
<b>Epitope Specificity</b>	1-100/251
<b>Isotype</b>	IgG
<b>Purity</b>	affinity purified by Protein A
<b>Buffer</b>	0.01M TBS (pH7.4) with 1% BSA, 0.02% Proclin300 and 50% Glycerol.
<b>SIMILARITY</b>	Belongs to the HAD-like hydrolase superfamily.
<b>Important Note</b>	This product as supplied is intended for research use only, not for use in human, therapeutic or diagnostic applications.
<b>Background Descriptions</b>	HDHD3 (haloacid dehalogenase-like hydrolase domain containing 3) is a 251 amino acid protein that belongs to the HAD-like hydrolase superfamily, which contains a group of hydrolase enzymes that differ from the $\alpha/\beta$ hydrolase family based on structure. This family of hydrolase enzymes includes L-2-haloacid dehalogenase, epoxide hydrolases and phosphatases. HDHD3 is encoded by a gene located on human chromosome 9q32. Chromosome 9 consists of about 145 million bases, 4% of the human genome and encodes nearly 900 genes. Thought to play a role in gender determination, deletion of the distal portion of 9p can lead to development of male to female sex reversal, the phenotype of a female with a male X,Y genotype.

## Additional Information

---

<b>Gene ID</b>	81932
<b>Other Names</b>	Haloacid dehalogenase-like hydrolase domain-containing protein 3, HDHD3, C9orf158
<b>Dilution</b>	WB=1:500-2000,IHC-P=1:100-500,IHC-F=1:100-500,IF=1:100-500,ELISA=1:5000-10000
<b>Format</b>	0.01M TBS(pH7.4) with 1% BSA, 0.09% (W/V) sodium azide and 50% Glyce
<b>Storage</b>	Store at -20 °C for one year. Avoid repeated freeze/thaw cycles. When reconstituted in sterile pH 7.4 0.01M PBS or diluent of antibody the antibody is stable for at least two weeks at 2-4 °C.

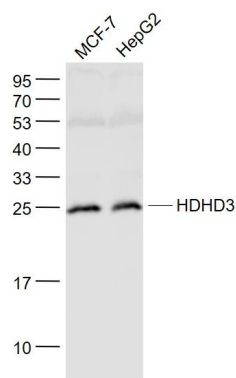
## Protein Information

---

Name	HDHD3
Synonyms	C9orf158

## Images

---



Sample:  
MCF-7(Human) Cell Lysate at 30 ug  
HepG2(Human) Cell Lysate at 30 ug  
Primary: Anti- HDHD3 (AP58963) at 1/1000 dilution  
Secondary: IRDye800CW Goat Anti-Rabbit IgG at 1/20000 dilution  
Predicted band size: 28 kD  
Observed band size: 25 kD

Please note: All products are 'FOR RESEARCH USE ONLY. NOT FOR USE IN DIAGNOSTIC OR THERAPEUTIC PROCEDURES'.