

KLHDC9 Polyclonal Antibody

Purified Rabbit Polyclonal Antibody (Pab)

Catalog # AP58975

Product Information

Application	WB, IHC-P, IHC-F, IF, E
Primary Accession	Q8NEP7
Reactivity	Rat, Pig, Dog, Bovine
Host	Rabbit
Clonality	Polyclonal
Calculated MW	37754

Additional Information

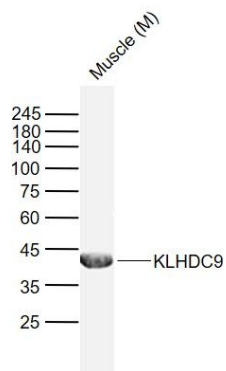
Gene ID	126823
Other Names	Kelch domain-containing protein 9, Kelch/ankyrin repeat-containing cyclin A1-interacting protein, KLHDC9, KARCA1
Dilution	WB=1:500-2000,IHC-P=1:100-500,IHC-F=1:100-500,IF=1:50-200,ELISA=1:5000-10000
Format	0.01M TBS(pH7.4) with 1% BSA, 0.09% (W/V) sodium azide and 50% Glyce
Storage	Store at -20 °C for one year. Avoid repeated freeze/thaw cycles. When reconstituted in sterile pH 7.4 0.01M PBS or diluent of antibody the antibody is stable for at least two weeks at 2-4 °C.

Protein Information

Name	KLHDC9
Synonyms	KARCA1

Images

Sample:
Lane 1: Muscle (Mouse) Lysate at 40 ug
Primary:
Anti-KLHDC9 (AP58975) at 1/1000 dilution
Secondary: IRDye800CW Goat Anti-Rabbit IgG at
1/20000 dilution
Predicted band size: 37 kD
Observed band size: 42 kD



Please note: All products are 'FOR RESEARCH USE ONLY. NOT FOR USE IN DIAGNOSTIC OR THERAPEUTIC PROCEDURES'.