

BRPF3 Polyclonal Antibody

Purified Rabbit Polyclonal Antibody (Pab)

Catalog # AP59003

Product Information

Application	WB, IHC-P, IHC-F, IF, E
Primary Accession	Q9ULD4
Reactivity	Rat, Pig, Dog, Bovine
Host	Rabbit
Clonality	Polyclonal
Calculated MW	135745
Physical State	Liquid
Immunogen	KLH conjugated synthetic peptide derived from human BRPF3
Epitope Specificity	1101-1205/1205
Isotype	IgG
Purity	affinity purified by Protein A
Buffer	0.01M TBS (pH7.4) with 1% BSA, 0.02% Proclin300 and 50% Glycerol.
SIMILARITY	Contains 1 bromo domain. Contains 1 PHD-type zinc finger. Contains 1 PWWP domain.
SUBUNIT	Component of the MOZ/MORF complex composed at least of ING5, KAT6A, KAT6B, MEAF6 and one of BRPF1, BRD1/BRPF2 and BRPF3.
Important Note	This product as supplied is intended for research use only, not for use in human, therapeutic or diagnostic applications.
Background Descriptions	BRPF3 is a 1,205 amino acid protein that forms a complex with MORF, MOZ, ING5, MEAF6 and BRPF. BRPF3 contains one bromo domain, a PHD-type zinc finger and a single PWWP domain. The gene encoding BRPF3 maps to human chromosome 6, which contains 170 million base pairs and comprises nearly 6% of the human genome. Deletion of a portion of the q arm of chromosome 6 is associated with early onset intestinal cancer, suggesting the presence of a cancer susceptibility locus. Additionally, Porphyria cutanea tarda, Parkinson's disease, Stickler syndrome and a susceptibility to bipolar disorder are all associated with genes that map to chromosome 6.

Additional Information

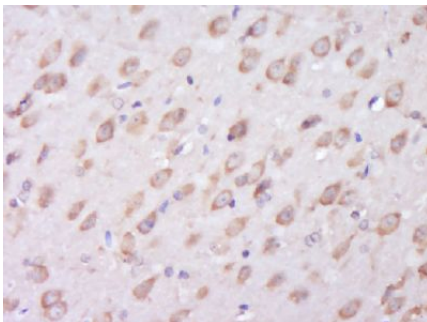
Gene ID	27154
Other Names	Bromodomain and PHD finger-containing protein 3, BRPF3 {ECO:0000303 PubMed:26620551, ECO:0000312 HGNC:HGNC:14256}
Dilution	WB=1:500-2000,IHC-P=1:100-500,IHC-F=1:100-500,IF=1:50-200,ELISA=1:5000-10000
Format	0.01M TBS(pH7.4) with 1% BSA, 0.09% (W/V) sodium azide and 50% Glyce
Storage	Store at -20 °C for one year. Avoid repeated freeze/thaw cycles. When

reconstituted in sterile pH 7.4 0.01M PBS or diluent of antibody the antibody is stable for at least two weeks at 2-4 °C.

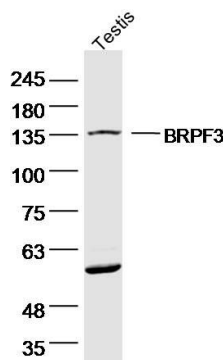
Protein Information

Name	BRPF3 {ECO:0000303 PubMed:26620551, ECO:0000312 HGNC:HGNC:14256}
Function	Scaffold subunit of various histone acetyltransferase (HAT) complexes, such as the MOZ/MORF and HBO1 complexes, which have a histone H3 acetyltransferase activity (PubMed: 16387653 , PubMed: 26620551 , PubMed: 26677226). Plays a role in DNA replication initiation by directing KAT7/HBO1 specificity towards histone H3 'Lys- 14' acetylation (H3K14ac), thereby facilitating the activation of replication origins (PubMed: 26620551). Component of the MOZ/MORF complex which has a histone H3 acetyltransferase activity (PubMed: 16387653).
Cellular Location	Nucleus

Images



Paraformaldehyde-fixed, paraffin embedded (Rat brain); Antigen retrieval by boiling in sodium citrate buffer (pH6.0) for 15min; Block endogenous peroxidase by 3% hydrogen peroxide for 20 minutes; Blocking buffer (normal goat serum) at 37°C for 30min; Antibody incubation with (BRPF3) Polyclonal Antibody, Unconjugated (AP59003) at 1:400 overnight at 4°C, followed by operating according to SP Kit(Rabbit) (sp-0023) instructions and DAB staining.



Sample: Testis (Mouse) Lysate at 40 ug
Primary: Anti-BRPF3 (AP59003) at 1/300 dilution
Secondary: IRDye800CW Goat Anti-Rabbit IgG at 1/20000 dilution
Predicted band size: 136 kD
Observed band size: 136 kD

Please note: All products are 'FOR RESEARCH USE ONLY. NOT FOR USE IN DIAGNOSTIC OR THERAPEUTIC PROCEDURES'.