

BTNL9 Polyclonal Antibody

Purified Rabbit Polyclonal Antibody (Pab)

Catalog # AP59005

Product Information

Application	WB, IHC-P, IHC-F, IF, ICC, E
Primary Accession	Q6UXG8
Reactivity	Rat
Host	Rabbit
Clonality	Polyclonal
Calculated MW	59716
Physical State	Liquid
Immunogen	KLH conjugated synthetic peptide derived from human BTNL9
Epitope Specificity	121-220/535
Isotype	IgG
Purity	affinity purified by Protein A
Buffer	0.01M TBS (pH7.4) with 1% BSA, 0.02% Proclin300 and 50% Glycerol.
SUBCELLULAR LOCATION	Membrane; Single-pass type I membrane protein
SIMILARITY	Belongs to the immunoglobulin superfamily. BTN/MOG family. Contains 1 B30.2/SPRY domain. Contains 1 Ig-like V-type (immunoglobulin-like) domain.
Important Note	This product as supplied is intended for research use only, not for use in human, therapeutic or diagnostic applications.
Background Descriptions	The specific function of BTNL9 is not yet known.

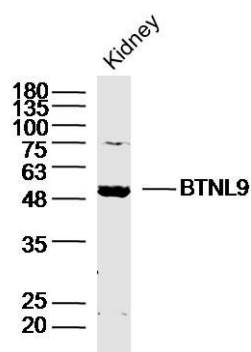
Additional Information

Gene ID	153579
Other Names	Butyrophilin-like protein 9, BTNL9
Dilution	WB=1:500-2000,IHC-P=1:100-500,IHC-F=1:100-500,ICC=1:100-500,IF=1:50-200, ELISA=1:5000-10000
Format	0.01M TBS(pH7.4) with 1% BSA, 0.09% (W/V) sodium azide and 50% Glyce
Storage	Store at -20 °C for one year. Avoid repeated freeze/thaw cycles. When reconstituted in sterile pH 7.4 0.01M PBS or diluent of antibody the antibody is stable for at least two weeks at 2-4 °C.

Protein Information

Name	BTNL9
Cellular Location	Membrane; Single-pass type I membrane protein

Images



Sample: Kidney (Mouse) Lysate at 40 ug
Primary: Anti-BTNL9(bs-8434) at 1/300 dilution
Secondary: IRDye800CW Goat Anti-Rabbit IgG at 1/20000 dilution
Predicted band size: 56kD
Observed band size: 56kD

Please note: All products are 'FOR RESEARCH USE ONLY. NOT FOR USE IN DIAGNOSTIC OR THERAPEUTIC PROCEDURES'.