

FBXO36 Polyclonal Antibody

Purified Rabbit Polyclonal Antibody (Pab)

Catalog # AP59014

Product Information

Application	WB, IHC-P, IHC-F, IF, E
Primary Accession	Q8NEA4
Reactivity	Rat, Dog, Bovine
Host	Rabbit
Clonality	Polyclonal
Calculated MW	22105
Physical State	Liquid
Immunogen	KLH conjugated synthetic peptide derived from human FBXO36
Epitope Specificity	1-100/188
Isotype	IgG
Purity	affinity purified by Protein A
Buffer	0.01M TBS (pH7.4) with 1% BSA, 0.02% Proclin300 and 50% Glycerol.
SIMILARITY	Contains 1 F-box domain.
SUBUNIT	Directly interacts with SKP1 and CUL1
Important Note	This product as supplied is intended for research use only, not for use in human, therapeutic or diagnostic applications.
Background Descriptions	FBXO36 is a 188 amino acid protein that contains one forty amino acid F-box region, making it a member of the F-box family. F-box proteins are critical components of the SCF (Skp1-CUL-1-F-box protein) type E3 ubiquitin ligase complex and are involved in substrate recognition and recruitment for ubiquitination. F-box proteins are members of a large family that regulates cell cycle, immune response, signaling cascades and developmental programs by targeting proteins, such as cyclins, cyclin-dependent kinase inhibitors, IκB- α and β -catenin, for degradation by the proteasome after ubiquitination. Functioning as a component of the SCF complex, FBXO36 is thought to recognize and bind to select phosphorylated proteins, thereby promoting their ubiquitination and subsequent degradation.

Additional Information

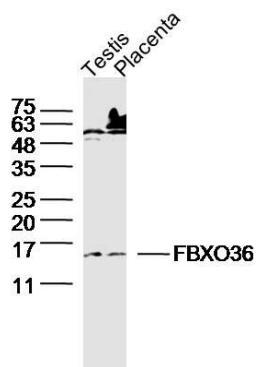
Gene ID	130888
Other Names	F-box only protein 36, FBXO36, FBX36
Dilution	WB=1:500-2000,IHC-P=1:100-500,IHC-F=1:100-500,IF=1:50-200,ELISA=1:5000-10000
Format	0.01M TBS(pH7.4) with 1% BSA, 0.09% (W/V) sodium azide and 50% Glyce
Storage	Store at -20 °C for one year. Avoid repeated freeze/thaw cycles. When reconstituted in sterile pH 7.4 0.01M PBS or diluent of antibody the antibody

is stable for at least two weeks at 2-4 °C.

Protein Information

Name	FBXO36
Synonyms	FBX36
Function	Substrate-recognition component of the SCF (SKP1-CUL1-F-box protein)-type E3 ubiquitin ligase complex.

Images



Sample:

Testis (mouse) Lysate at 40 ug
placenta (mouse) Lysate at 40 ug
Primary: Anti- FBXO36(AP59014)at 1/300 dilution
Secondary: IRDye800CW Goat Anti-Rabbit IgG at 1/20000 dilution
Predicted band size: 22kD
Observed band size: 16 kD

Please note: All products are 'FOR RESEARCH USE ONLY. NOT FOR USE IN DIAGNOSTIC OR THERAPEUTIC PROCEDURES'.