

RENBP Rabbit pAb

RENBP Rabbit pAb
Catalog # AP59020

Product Information

Application	IHC-P, IHC-F, IF
Reactivity	Human
Predicted	Mouse, Rat, Horse, Sheep
Host	Rabbit
Clonality	Polyclonal
Calculated MW	49 KDa
Physical State	Liquid
Immunogen	KLH conjugated synthetic peptide derived from human RENBP
Epitope Specificity	101-200/427
Isotype	IgG
Purity	affinity purified by Protein A
Buffer	0.01M TBS (pH7.4) with 1% BSA, 0.02% Proclin300 and 50% Glycerol.
SIMILARITY	Belongs to the N-acetylglucosamine 2-epimerase family.
SUBUNIT	Homodimer.
Important Note	This product as supplied is intended for research use only, not for use in human, therapeutic or diagnostic applications.
Background Descriptions	RENBP is a 427 amino acid protein that is a proteinaceous renin inhibitor. In inhibiting renin, RENBP forms a complex with it; a high molecular weight renin. RENBP contains a leucine zipper domain, which is essential for its dimerization with renin. RENBP can catalyze the interconversion of N-acetylglucosamine to N-acetylmannosamine, indicating that it is a GlcNAc 2-epimerase. Sequences of porcine, human and rat renin-binding proteins are highly homologous. The RENBP gene is conserved in dog, mouse, rat and zebrafish, and maps to human chromosome Xq28 between DXS52 and G6PD. Rat Renbp is located on chromosome X at Xq37 close to marker DXWox3 and falls outside the BP QTL regions on chromosome X.

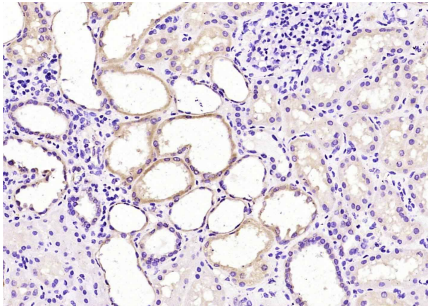
Additional Information

Other Names	N-acetylglucosamine 2-epimerase, AGE, 5.1.3.8, GlcNAc 2-epimerase, N-acetyl-D-glucosamine 2-epimerase, Renin-binding protein, RnBP, RENBP
Dilution	IHC-P=1:100-500,IHC-F=1:100-500,IF=1:100-500
Storage	Store at -20 °C for one year. Avoid repeated freeze/thaw cycles. When reconstituted in sterile pH 7.4 0.01M PBS or diluent of antibody the antibody is stable for at least two weeks at 2-4 °C.

Background

RENBP is a 427 amino acid protein that is a proteinaceous renin inhibitor. In inhibiting renin, RENBP forms a complex with it; a high molecular weight renin. RENBP contains a leucine zipper domain, which is essential for its dimerization with renin. RENBP can catalyze the interconversion of N-acetylglucosamine to N-acetylmannosamine, indicating that it is a GlcNAc 2-epimerase. Sequences of porcine, human and rat renin-binding proteins are highly homologous. The RENBP gene is conserved in dog, mouse, rat and zebrafish, and maps to human chromosome Xq28 between DXS52 and G6PD. Rat Renbp is located on chromosome X at Xq37 close to marker DXWox3 and falls outside the BP QTL regions on chromosome X.

Images



Paraformaldehyde-fixed, paraffin embedded (Human kidney tissue); Antigen retrieval by boiling in sodium citrate buffer (pH6.0) for 15min; Block endogenous peroxidase by 3% hydrogen peroxide for 20 minutes; Blocking buffer (normal goat serum) at 37°C for 30min; Antibody incubation with (RENBP) Polyclonal Antibody, Unconjugated (AP59020) at 1:400 overnight at 4°C, followed by operating according to SP Kit(Rabbit) (sp-0023) instructions and DAB staining.

Please note: All products are 'FOR RESEARCH USE ONLY. NOT FOR USE IN DIAGNOSTIC OR THERAPEUTIC PROCEDURES'.