

PDE3B Polyclonal Antibody

Purified Rabbit Polyclonal Antibody (Pab)

Catalog # AP59050

Product Information

Application	WB, IHC-P, IHC-F, IF, ICC, E
Primary Accession	Q13370
Reactivity	Rat, Pig, Dog
Host	Rabbit
Clonality	Polyclonal
Calculated MW	124333
Physical State	Liquid
Immunogen	KLH conjugated synthetic peptide derived from human PDE3B
Epitope Specificity	451-550/1112
Isotype	IgG
Purity	affinity purified by Protein A
Buffer	0.01M TBS (pH7.4) with 1% BSA, 0.02% Proclin300 and 50% Glycerol.
SUBCELLULAR LOCATION	Membrane.
SIMILARITY	Belongs to the cyclic nucleotide phosphodiesterase family. PDE3 subfamily.
Important Note	This product as supplied is intended for research use only, not for use in human, therapeutic or diagnostic applications.
Background Descriptions	PDE3B is found in lymphocytes. The PDE7A1 (HCP1) isozyme and the PDE7A2 proteins, alternate splice products of PDE7A, are highly expressed in skeletal muscle. PDE7B is most highly expressed in pancreas. The PDE family contains proteins that serve tissue-specific roles in regulation of lipolysis, glycogenolysis, myocardial contractility, and smooth muscle relaxation.

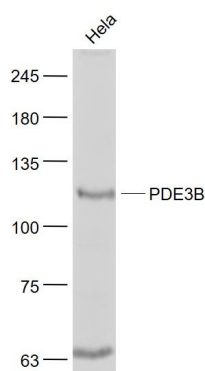
Additional Information

Gene ID	5140
Other Names	cGMP-inhibited 3', 5'-cyclic phosphodiesterase B, 3.1.4.17, CGIPDE1, CGIP1, Cyclic GMP-inhibited phosphodiesterase B, CGI-PDE B, PDE3B
Target/Specificity	Abundant in adipose tissues.
Dilution	WB=1:500-2000,IHC-P=1:100-500,IHC-F=1:100-500,ICC=1:100-500,IF=1:100-500,ELISA=1:5000-10000
Format	0.01M TBS(pH7.4) with 1% BSA, 0.09% (W/V) sodium azide and 50% Glyce
Storage	Store at -20 °C for one year. Avoid repeated freeze/thaw cycles. When reconstituted in sterile pH 7.4 0.01M PBS or diluent of antibody the antibody is stable for at least two weeks at 2-4 °C.

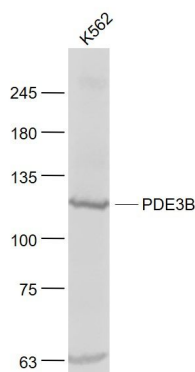
Protein Information

Name	PDE3B (HGNC:8779)
Function	Cyclic nucleotide phosphodiesterase with a dual-specificity for the second messengers cAMP and cGMP, which are key regulators of many important physiological process (PubMed: 14592490 , PubMed: 21393242). Regulates angiogenesis by inhibiting the cAMP- dependent guanine nucleotide exchange factor RAPGEF3 and downstream phosphatidylinositol 3-kinase gamma-mediated signaling (PubMed: 21393242). Controls cardiac contractility by reducing cAMP concentration in cardiocytes (By similarity).
Cellular Location	Membrane {ECO:0000250 UniProtKB:Q61409}; Multi- pass membrane protein
Tissue Location	Abundant in adipose tissues.

Images



Sample:
Hela(Human) Cell Lysate at 30 ug
Primary: Anti- PDE3B (AP59050) at 1/1000 dilution
Secondary: IRDye800CW Goat Anti-Rabbit IgG at 1/20000 dilution
Predicted band size: 124 kD
Observed band size: 124 kD



Sample:
K562(Human) Cell Lysate at 30 ug
Primary: Anti- PDE3B (AP59050) at 1/1000 dilution
Secondary: IRDye800CW Goat Anti-Rabbit IgG at 1/20000 dilution
Predicted band size: 124 kD
Observed band size: 124 kD

Please note: All products are 'FOR RESEARCH USE ONLY. NOT FOR USE IN DIAGNOSTIC OR THERAPEUTIC PROCEDURES'.