

# RELL2 Rabbit pAb

RELL2 Rabbit pAb  
Catalog # AP59063

## Product Information

---

<b>Application</b>	IHC-P, IHC-F, IF
<b>Primary Accession</b>	<a href="#">Q8NC24</a>
<b>Reactivity</b>	Mouse
<b>Predicted</b>	Human, Rat, Dog, Pig, Horse, Rabbit, Sheep
<b>Host</b>	Rabbit
<b>Clonality</b>	Polyclonal
<b>Calculated MW</b>	32405
<b>Physical State</b>	Liquid
<b>Immunogen</b>	KLH conjugated synthetic peptide derived from human REL2
<b>Epitope Specificity</b>	101-200/303
<b>Isotype</b>	IgG
<b>Purity</b>	affinity purified by Protein A
<b>Buffer</b>	Preservative: 0.02% Proclin300, Constituents: 1% BSA, 0.01M PBS, pH7.4.
<b>SUBCELLULAR LOCATION</b>	Cell membrane.
<b>SIMILARITY</b>	Belongs to the RELT family.
<b>Post-translational modifications</b>	Phosphorylated in vitro by OXSR1.
<b>Important Note</b>	This product as supplied is intended for research use only, not for use in human, therapeutic or diagnostic applications.

## Additional Information

---

<b>Gene ID</b>	285613
<b>Other Names</b>	RELT-like protein 2, REL2, C5orf16
<b>Target/Specificity</b>	Primarily expressed in spleen, thymus, testis, peripheral blood leukocytes, brain and placenta. Not detected in prostate, ovary, small intestine, colon, heart, lung, liver, skeletal muscle, kidney and pancreas.
<b>Dilution</b>	IHC-P=1:100-500,IHC-F=1:100-500,IF=1:100-500
<b>Storage</b>	Store at -20 °C for one year. Avoid repeated freeze/thaw cycles. When reconstituted in sterile pH 7.4 0.01M PBS or diluent of antibody the antibody is stable for at least two weeks at 2-4 °C.

## Protein Information

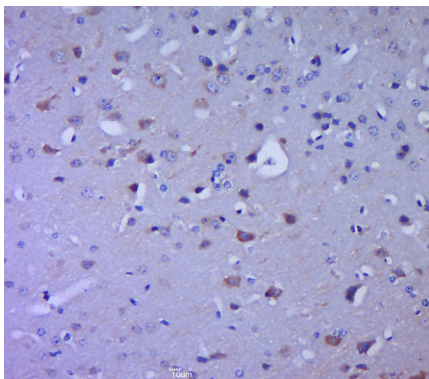
---

<b>Name</b>	RELL2
-------------	-------

<b>Synonyms</b>	C5orf16
<b>Function</b>	Induces activation of MAPK14/p38 cascade, when overexpressed (PubMed: <a href="#">28688764</a> ). Induces apoptosis, when overexpressed (PubMed: <a href="#">19969290</a> ).
<b>Cellular Location</b>	Cell membrane; Single-pass membrane protein
<b>Tissue Location</b>	Primarily expressed in spleen, thymus, testis, peripheral blood leukocytes, brain and placenta. Not detected in prostate, ovary, small intestine, colon, heart, lung, liver, skeletal muscle, kidney and pancreas.

## Images

---



Paraformaldehyde-fixed, paraffin embedded (mouse brain tissue); Antigen retrieval by boiling in sodium citrate buffer (pH6.0) for 15min; Block endogenous peroxidase by 3% hydrogen peroxide for 20 minutes; Blocking buffer (normal goat serum) at 37°C for 30min; Antibody incubation with (RELL2) Polyclonal Antibody, Unconjugated (AP59063) at 1:400 overnight at 4°C, followed by a conjugated secondary (sp-0023) for 20 minutes and DAB staining.

Please note: All products are 'FOR RESEARCH USE ONLY. NOT FOR USE IN DIAGNOSTIC OR THERAPEUTIC PROCEDURES'.