

Transcription factor Sp5 Polyclonal Antibody

Purified Rabbit Polyclonal Antibody (Pab)

Catalog # AP59078

Product Information

Application	WB, IHC-P, IHC-F, IF, ICC, E
Primary Accession	Q6BEB4
Reactivity	Rat
Host	Rabbit
Clonality	Polyclonal
Calculated MW	41964
Physical State	Liquid
Immunogen	KLH conjugated synthetic peptide derived from human Transcription factor Sp5
Epitope Specificity	51-150/398
Isotype	IgG
Purity	affinity purified by Protein A
Buffer	Preservative: 0.02% Proclin300, Constituents: 1% BSA, 0.01M PBS, pH7.4.
SUBCELLULAR LOCATION	Nuclear.
SIMILARITY	Belongs to the Sp1 C2H2-type zinc-finger protein family. Contains 3 C2H2-type zinc fingers.
Important Note	This product as supplied is intended for research use only, not for use in human, therapeutic or diagnostic applications.
Background Descriptions	Sp5 is a member of the Sp family of zinc finger transcription factors. Like other family members, the Sp5 protein contains a Cys2His2 zinc finger DNA binding domain at the C-terminus. Elevated expression of Sp5 has been noted in several human tumors including hepatocellular carcinoma, gastric cancer and colon cancer.

Additional Information

Gene ID	389058
Other Names	Transcription factor Sp5, SP5
Dilution	WB=1:500-2000,IHC-P=1:100-500,IHC-F=1:100-500,ICC=1:100-500,IF=1:100-500,ELISA=1:5000-10000
Format	0.01M TBS(pH7.4) with 1% BSA, 0.09% (W/V) sodium azide and 50% Glyce
Storage	Store at -20 °C for one year. Avoid repeated freeze/thaw cycles. When reconstituted in sterile pH 7.4 0.01M PBS or diluent of antibody the antibody is stable for at least two weeks at 2-4 °C.

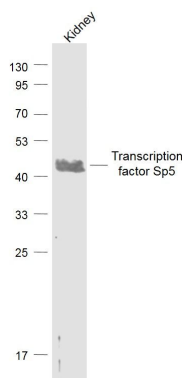
Protein Information

Name SP5

Function Binds to GC boxes promoters elements. Probable transcriptional activator that has a role in the coordination of changes in transcription required to generate pattern in the developing embryo (By similarity).

Cellular Location Nucleus.

Images



Sample:

Kidney (Mouse) Lysate at 40 ug

Primary: Anti-Transcription factor Sp5 (AP59078) at 1/1000 dilution

Secondary: IRDye800CW Goat Anti-Rabbit IgG at 1/20000 dilution

Predicted band size: 42 kD

Observed band size: 42 kD

Please note: All products are 'FOR RESEARCH USE ONLY. NOT FOR USE IN DIAGNOSTIC OR THERAPEUTIC PROCEDURES'.