

TIM 3 Polyclonal Antibody

Purified Rabbit Polyclonal Antibody (Pab)

Catalog # AP59082

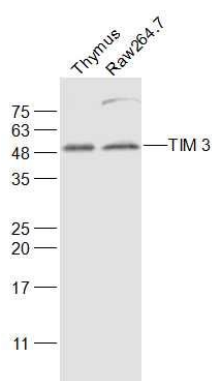
Product Information

Application	WB, IHC-P, IHC-F, IF, ICC, E
Reactivity	Rat
Host	Rabbit
Clonality	Polyclonal
Calculated MW	29 KDa
Physical State	Liquid
Immunogen	KLH conjugated synthetic peptide derived from mouse HAVCR2
Epitope Specificity	151-250/281
Isotype	IgG
Purity	affinity purified by Protein A
Buffer	0.01M TBS (pH7.4) with 1% BSA, 0.02% Proclin300 and 50% Glycerol.
SUBCELLULAR LOCATION	Membrane.
SIMILARITY	Belongs to the immunoglobulin superfamily. TIM family. Contains 1 Ig-like V-type (immunoglobulin-like) domain.
Post-translational modifications	O-glycosylated with core 1 or possibly core 8 glycans.
Important Note	This product as supplied is intended for research use only, not for use in human, therapeutic or diagnostic applications.
Background Descriptions	The protein encoded by this gene belongs to the immunoglobulin superfamily, and TIM family of proteins. CD4-positive T helper lymphocytes can be divided into types 1 (Th1) and 2 (Th2) on the basis of their cytokine secretion patterns. Th1 cells are involved in cell-mediated immunity to intracellular pathogens and delayed-type hypersensitivity reactions, whereas, Th2 cells are involved in the control of extracellular helminthic infections and the promotion of atopic and allergic diseases. This protein is a Th1-specific cell surface protein that regulates macrophage activation, and inhibits Th1-mediated auto- and alloimmune responses, and promotes immunological tolerance. [provided by RefSeq, Sep 2011]

Additional Information

Target/Specificity	T-helper type 1 lymphocyte (Th1)-specific.
Dilution	WB=1:500-2000,IHC-P=1:100-500,IHC-F=1:100-500,ICC=1:100-500,IF=1:100-500,ELISA=1:5000-10000
Format	0.01M TBS(pH7.4) with 1% BSA, 0.09% (W/V) sodium azide and 50% Glyce
Storage	Store at -20 °C for one year. Avoid repeated freeze/thaw cycles. When reconstituted in sterile pH 7.4 0.01M PBS or diluent of antibody the antibody is stable for at least two weeks at 2-4 °C.

Images



Sample:

Thymus (Mouse) Lysate at 40 ug

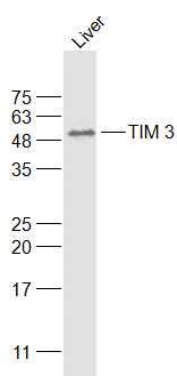
Raw264.7(Mouse) Cell Lysate at 30 ug

Primary: Anti-TIM 3 (AP59082) at 1/1000 dilution

Secondary: IRDye800CW Goat Anti-Rabbit IgG at 1/20000 dilution

Predicted band size: 29 kD

Observed band size: 49 kD



Sample:

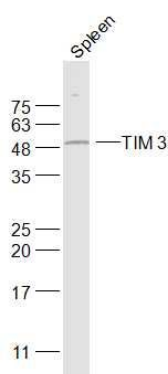
Liver(Rat) Lysate at 40 ug

Primary: Anti-TIM 3 (AP59082) at 1/1000 dilution

Secondary: IRDye800CW Goat Anti-Rabbit IgG at 1/20000 dilution

Predicted band size: 29 kD

Observed band size: 49 kD



Sample:

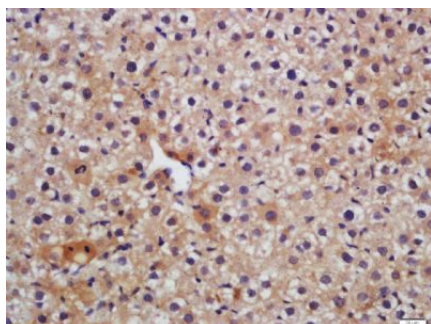
Spleen (Mouse) Lysate at 40 ug

Primary: Anti-TIM 3 (AP59082) at 1/1000 dilution

Secondary: IRDye800CW Goat Anti-Rabbit IgG at 1/20000 dilution

Predicted band size: 29 kD

Observed band size: 49 kD



Tissue/cell: rat liver tissue; 4% Paraformaldehyde-fixed and paraffin-embedded;

Antigen retrieval: citrate buffer (0.01M, pH 6.0), Boiling bathing for 15min; Block endogenous peroxidase by 3% Hydrogen peroxide for 30min; Blocking buffer (normal goat serum,C-0005) at 37°C for 20 min;

Incubation: Anti-TIM-3 Polyclonal Antibody, Unconjugated(AP59082) 1:200, overnight at 4°C, followed by conjugation to the secondary antibody(SP-0023) and DAB(C-0010) staining

Please note: All products are 'FOR RESEARCH USE ONLY. NOT FOR USE IN DIAGNOSTIC OR THERAPEUTIC PROCEDURES'.