

ACSF3 Antibody (Center)

Affinity Purified Rabbit Polyclonal Antibody (Pab)
Catalog # AP5910c

Product Information

Application	WB, IHC-P, E
Primary Accession	Q4G176
Other Accession	NP_001120686.1 , NP_777577.2
Reactivity	Human, Mouse
Host	Rabbit
Clonality	Polyclonal
Isotype	Rabbit IgG
Clone Names	RB24421
Calculated MW	64130
Antigen Region	413-442

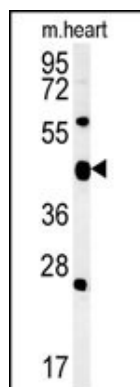
Additional Information

Gene ID	197322
Other Names	Acyl-CoA synthetase family member 3, mitochondrial, 621-, ACSF3
Target/Specificity	This ACSF3 antibody is generated from rabbits immunized with a KLH conjugated synthetic peptide between 413-442 amino acids from the Central region of human ACSF3.
Dilution	WB~~1:1000 IHC-P~~1:100~500 E~~Use at an assay dependent concentration.
Format	Purified polyclonal antibody supplied in PBS with 0.09% (W/V) sodium azide. This antibody is purified through a protein A column, followed by peptide affinity purification.
Storage	Maintain refrigerated at 2-8°C for up to 2 weeks. For long term storage store at -20°C in small aliquots to prevent freeze-thaw cycles.
Precautions	ACSF3 Antibody (Center) is for research use only and not for use in diagnostic or therapeutic procedures.

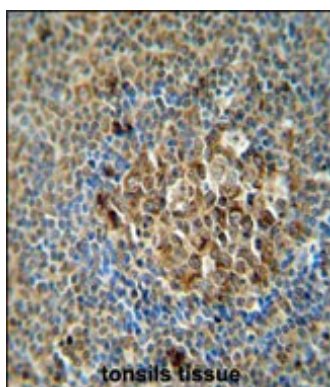
Protein Information

Name	ACSF3 (HGNC:27288)
Function	Catalyzes the initial reaction in intramitochondrial fatty acid synthesis, by activating malonate and methylmalonate, but not acetate, into their respective CoA thioester (PubMed: 21841779 , PubMed: 21846720). May have some preference toward very-long-chain substrates (PubMed: 17762044).

Images



ACSF3 Antibody (Center) (Cat. #AP5910c) western blot analysis in mouse heart tissue lysates (15ug/lane). This demonstrates the ACSF3 antibody detected ACSF3 protein (arrow).



ACSF3 antibody (Center) (Cat. #AP5910c) immunohistochemistry analysis in formalin fixed and paraffin embedded human tonsils tissue followed by peroxidase conjugation of the secondary antibody and DAB staining. This data demonstrates the use of the ACSF3 antibody (Center) for immunohistochemistry. Clinical relevance has not been evaluated.

Please note: All products are 'FOR RESEARCH USE ONLY. NOT FOR USE IN DIAGNOSTIC OR THERAPEUTIC PROCEDURES'.