

# AKIRIN2 Polyclonal Antibody

Purified Rabbit Polyclonal Antibody (Pab)

Catalog # AP59135

## Product Information

---

<b>Application</b>	IHC-P, IHC-F, IF, E
<b>Primary Accession</b>	<a href="#">Q53H80</a>
<b>Reactivity</b>	Rat, Pig, Dog, Bovine
<b>Host</b>	Rabbit
<b>Clonality</b>	Polyclonal
<b>Calculated MW</b>	22496
<b>Physical State</b>	Liquid
<b>Immunogen</b>	KLH conjugated synthetic peptide derived from human AKIRIN2
<b>Epitope Specificity</b>	51-150/203
<b>Isotype</b>	IgG
<b>Purity</b>	affinity purified by Protein A
<b>Buffer</b>	0.01M TBS (pH7.4) with 1% BSA, 0.02% Proclin300 and 50% Glycerol.
<b>SUBCELLULAR LOCATION</b>	Nucleus
<b>SIMILARITY</b>	Belongs to the akirin family.
<b>SUBUNIT</b>	Interacts with YWHAB (By similarity).
<b>Important Note</b>	This product as supplied is intended for research use only, not for use in human, therapeutic or diagnostic applications.
<b>Background Descriptions</b>	Required for the innate immune response. Downstream effector of the Toll-like receptor (TLR), TNF and IL-1 beta signaling pathways leading to the production of IL-6. Forms a complex with YWHAB that acts to repress transcription of DUSP1.

## Additional Information

---

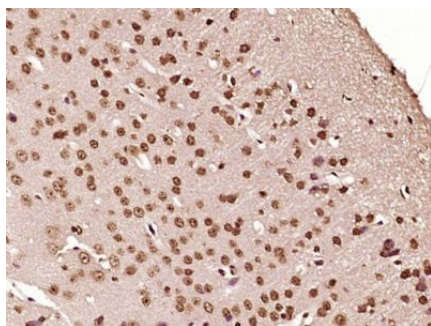
<b>Gene ID</b>	55122
<b>Other Names</b>	Akirin-2, AKIRIN2, C6orf166
<b>Target/Specificity</b>	Widely expressed with the highest expression in peripheral blood leukocytes
<b>Dilution</b>	IHC-P=1:100-500,IHC-F=1:100-500,IF=1:50-200,ELISA=1:5000-10000
<b>Format</b>	0.01M TBS(pH7.4) with 1% BSA, 0.09% (W/V) sodium azide and 50% Glyce
<b>Storage</b>	Store at -20 °C for one year. Avoid repeated freeze/thaw cycles. When reconstituted in sterile pH 7.4 0.01M PBS or diluent of antibody the antibody is stable for at least two weeks at 2-4 °C.

## Protein Information

---

<b>Name</b>	AKIRIN2 {ECO:0000303   PubMed:18066067, ECO:0000312   HGNC:HGNC:21407}
<b>Function</b>	Molecular adapter that acts as a bridge between a variety of multiprotein complexes, and which is involved in embryonic development, immunity, myogenesis and brain development (PubMed: <a href="#">34711951</a> ). Plays a key role in nuclear protein degradation by promoting import of proteasomes into the nucleus: directly binds to fully assembled 20S proteasomes at one end and to nuclear import receptor IPO9 at the other end, bridging them together and mediating the import of pre-assembled proteasome complexes through the nuclear pore (PubMed: <a href="#">34711951</a> ). Involved in innate immunity by regulating the production of interleukin-6 (IL6) downstream of Toll-like receptor (TLR): acts by bridging the NF-kappa-B inhibitor NFKBIZ and the SWI/SNF complex, leading to promote induction of IL6 (By similarity). Also involved in adaptive immunity by promoting B-cell activation (By similarity). Involved in brain development: required for the survival and proliferation of cerebral cortical progenitor cells (By similarity). Involved in myogenesis: required for skeletal muscle formation and skeletal development, possibly by regulating expression of muscle differentiation factors (By similarity). Also plays a role in facilitating interdigital tissue regression during limb development (By similarity).
<b>Cellular Location</b>	Nucleus. Cytoplasm {ECO:0000250   UniProtKB:B1AXD8} Membrane {ECO:0000250   UniProtKB:B1AXD8}. Note=Present mainly in the nuclear fraction, and at much lower level in the cytoplasmic and membrane fractions. {ECO:0000250   UniProtKB:B1AXD8}
<b>Tissue Location</b>	Widely expressed with the highest expression in peripheral blood leukocytes.

## Images



Paraformaldehyde-fixed, paraffin embedded (Mouse brain); Antigen retrieval by boiling in sodium citrate buffer (pH6.0) for 15min; Block endogenous peroxidase by 3% hydrogen peroxide for 20 minutes; Blocking buffer (normal goat serum) at 37°C for 30min; Antibody incubation with (AKIRIN2) Polyclonal Antibody, Unconjugated (AP59135) at 1:400 overnight at 4°C, followed by operating according to SP Kit(Rabbit) (sp-0023) instructions and DAB staining.

Please note: All products are 'FOR RESEARCH USE ONLY. NOT FOR USE IN DIAGNOSTIC OR THERAPEUTIC PROCEDURES'.